

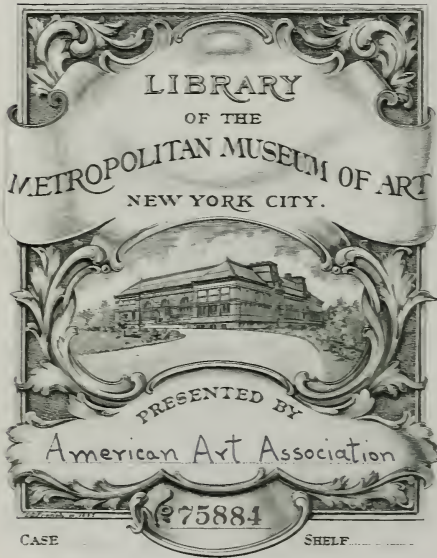
THE METROPOLITAN MUSEUM OF ART



3 0620 00365848 0

119.8

P01
19334



NO PHOTOCOPYING

IN ORDER TO PROTECT THE FRAGILE
PAPER BINDING OF THIS VOLUME



Digitized by the Internet Archive
in 2014

<https://archive.org/details/finefurniture00amer>

SALE NUMBER 4068
EXHIBITION DAILY FROM NOVEMBER 25
SUNDAY AND NOVEMBER 30 FROM 2 TO 5
WEEKDAYS FROM 9 TO 6

FINE FURNITURE

ORIENTAL RUGS • TEXTILES
BRONZES • PRINTS AND PAINTINGS
TABLE PORCELAINS AND SILVER
And Other Decorative Objects

*From the Arliss • Sutton • Thomas
and Other Collections and Estates*



Unrestricted Public Sale
December 1 and 2 at 2:15 p. m.

AMERICAN ART ASSOCIATION
ANDERSON GALLERIES • INC
30 East Fifty-Seventh Street • New York
1933

Priced Catalogues

A priced copy of this Catalogue may be
obtained for One Dollar for each
Session of the Sale



AMERICAN ART ASSOCIATION
ANDERSON GALLERIES · INC

DESIGNS ITS CATALOGUES
AND DIRECTS ALL DETAILS OF ILLUSTRATION
TEXT AND TYPOGRAPHY

NEW YORK STATE ONE PER CENT RETAIL SALES TAX
IN ADDITION TO BID PRICES PURCHASERS ARE OBLIGATED TO PAY AN AMOUNT EQUAL TO ONE PER CENT (1%) OF THEIR BID PRICES, UNLESS A SUITABLE CERTIFICATE IS FURNISHED THAT THE PURCHASES ARE MADE FOR RESALE

Conditions of Sale

[1]

All bids to be PER PIECE as numbered in the catalogue, unless otherwise mentioned.

[2]

The highest bidder to be the buyer. In all cases of disputed bids the lot shall be resold, but the auctioneer will use his judgment as to the good faith of all claims, and his decision shall be final.

[3]

Any bid which is not commensurate with the value of the article offered, or which is merely a nominal or fractional advance, may be rejected by the auctioneer if in his judgment such bid would be likely to affect the sale injuriously.

[4]

The name of the buyer of each lot shall be given immediately after the sale thereof, and when so required, each buyer shall sign a card giving the lot number, amount for which sold, and his or her name and address. ¶ A deposit at the actual time of the sale shall be made of all or such part of the purchase prices as may be required. ¶ If the two foregoing conditions are not complied with, the lot or lots so purchased may at the option of the auctioneer be put up again and resold.

[5]

Title passes upon the fall of the auctioneer's hammer, and thereafter the property is at the purchaser's risk, and neither the owner nor the Company is responsible for the loss of, or any damage to any article by theft, fire, breakage, however occasioned, or any other cause whatsoever.

[6]

Articles not paid for in full and not called for by the purchaser by noon of the day following that of the sale may be turned over by the Company to some carter to be carried to and stored in some warehouse until the time of the delivery therefrom to the purchaser, and the cost of such cartage and storage and any other charges will be charged against the purchaser, and the risk of loss or damage occasioned by such removal or storage will be upon the purchaser. ¶ In any instance where the bill has not been paid in full by noon of the day following that of the sale, the Company reserves the right, any other stipulation in these conditions of sale to the contrary notwithstanding, in respect to any or all lots included in the bill, at its option, either to cancel the sale thereof or to resell the same at public or private sale without further notice for the account of the buyer and to hold the buyer responsible for any deficiency sustained in so doing.

[A]

[7]

The Company exercises great care to catalogue every lot correctly and endeavors therein and also at the actual time of the sale to point out any error, defect, or imperfection, but guaranty is not made either by the owner or the Company of the correctness of the description, genuineness, authenticity or condition of any lot, and no sale will be set aside on account of any incorrectness, error of cataloguing or imperfection not noted or pointed out. Every lot is sold "as is" and without recourse.

[8]

Buying or bidding by the Company for responsible parties on orders transmitted to it by mail, telegraph, or telephone, if conditions permit, will be faithfully attended to without charge. Any purchases so made will be subject to the foregoing conditions of sale. Orders for execution by the Company should be given with such clearness as to leave no room for misunderstanding. Not only should the lot number be given, but also the name of the object, and a bid on several objects catalogued under a single number should be stated to be so much per piece unless the description contains the notation "[Lot.]", in which case the bid should be stated to be so much FOR THE LOT. If the one transmitting the order is unknown to the Company, a deposit must be sent or reference submitted. Shipping directions should also be given.

[9]

The Company will afford every facility for the employment of carriers and packers by the purchasers, but will not be responsible for any damage arising from the acts of such carriers and packers.

[THESE CONDITIONS OF SALE CANNOT BE ALTERED
EXCEPT BY AN OFFICER OF THE COMPANY]

Sales conducted by

O. BERNET

H. H. PARKE

A. N. BADE

H. E. RUSSELL, JR.

Telephone PLAZA 3-1269

Catalogues on Request

Cable ARTGAL or ANDAUCION

AMERICAN ART ASSOCIATION
ANDERSON GALLERIES · INC

New York: 30 EAST 57TH STREET

London Representative: SHIRLEY FALCKE
77 Brook Street, Grosvenor Square, W. 1

[A]

Order of Sale

FIRST SESSION

FRIDAY AFTERNOON, DECEMBER FIRST

Table Glass	1- 8
Staffordshire Ware and Table Porcelains	9- 19
Satsuma Ware and Chinese Porcelains	20- 42
Silver and Silver-plated Ware	43- 65
Japanese Netsuke and Carved Ivories	66-126
Furniture and Decorations	127-188
Oriental Rugs	195-228
Prints and Paintings	229-264

SECOND AND LAST SESSION

SATURDAY AFTERNOON, DECEMBER SECOND

Egyptian Antiquities	265-267
Bronzes by Barye, Proctor, and Rodin	268-282
Damasks, Brocades, Velvets, and Embroideries	283-320
Furniture and Decorations	321-406
Tapestries	407-409
Oriental Rugs	410-448
Paintings and Prints	449-468

First Session

Friday, December 1, 1933, at 2:15 p.m.

Catalogue Numbers 1 to 264 Inclusive

TABLE GLASS

1. TWO VENETIAN GLASS GOBLETS

7- Flower-form goblet in amber glass, the knopped stem ornamented with ridged scrolls, the cover with pear finial; and painted clear glass goblet. (*Arliss*)

Heights, 16 and 11 $\frac{3}{4}$ inches

2. OPALINE GLASS TABLE GARNITURE

35- Comprising: centrepiece, six compotes, covered muffin dish, fruit bowl, and small bowl. Rimmed in gold. [Lot.] (*Sutton*)

3. SERVICE OF ETCHED GLASSWARE

55- Comprising: twelve highball glasses, four goblets, seven tall clarets, seven ports, seven sherries, ten sherbets, five liqueurs, ten finger bowls, and spirally ribbed ewer mounted in chased silver. [Lot.] (*Arliss*)

4. SERVICE OF GREEN GLASSWARE

5- Comprising: twelve goblets, twelve champagnes, twelve sherries, plain water pitcher, and etched flower vase. [Lot.] (*Arliss*)

5. SERVICE OF CUT CRYSTAL GLASS TABLE WARE

85- Comprising: seventeen goblets, six tumblers, eight sherbets with trays, ten champagnes, four clarets, eleven sherries, five ports, eleven whiskies, five liqueurs, nine finger bowls and ten trays, pair ewer-shaped decanters, water pitcher, and covered sugar bowl. Cut with a floral pattern. [Lot.] (*Thomas*)

6. LOT OF CUT TABLE GLASS

40 - Including assorted bowls, covered jars, two-handled vase, hob-nail-cut decanter, and other pieces. In all, twenty-three pieces. [Lot.] (*Arliss*)

7. LOT OF ASSORTED TINTED GLASSWARE

25 - Including eleven 'crackled' glass fluted finger bowls with trays and a bowl, two painted glass jars, two Venetian glass flower holders, and other pieces. In all, thirty-four pieces. [Lot.] (*Sutton*)

8. LOT OF ETCHED TABLE GLASS

20 - Comprising: two shaped decanters and two ewers, muffin dish and nine goblets; etched with animals and birds in landscape. [Lot.] (*Sutton*)

STAFFORDSHIRE WARE AND
TABLE PORCELAINS

9. EARLY STAFFORDSHIRE SILVER LUSTRE TEAPOT

9 - With squat gadrooned body and cover. Height, $5\frac{3}{4}$ inches

10. EARLY BLUE STAFFORDSHIRE DON QUIXOTE PLATE

3 - 'Knighthood Confer'd on Don Quixote'; fine dark blue, with floral border. Small repair. Diameter, 10 inches

11. EARLY STAFFORDSHIRE SILVER LUSTRE TEAPOT
AND COFFEE POT

12 ⁵⁰ - Gadrooned teapot and plain ovoid coffee pot. [Lot.]
Heights, $6\frac{3}{4}$ and 9 inches

12. DRESDEN PORCELAIN SWEETMEAT DISH
AND TWELVE FRUIT PLATES

17 ⁵⁰ - Triple shell dish with handle, the plates with pierced rims; decorated with nosegays of spring flowers. Some chips. [Lot.] (*Arliss*)



[NUMBER 13]

13. CHAMBERLAIN'S WORCESTER DECORATED PORCELAIN
DINNER SERVICE

Circa 1830

Comprising: thirty dinner plates, twelve soup plates, twenty-three dessert plates, soup tureen, four covered vegetable dishes, thirteen graduated oval platters and a strainer, two sauce boats and one tray. White porcelain decorated with scattered blossoms and a nosegay of spring flowers. Some repairs and chips. [Lot.] (*Arliss*)

[See illustration of part]

- 40- 14. FINE CROWN DERBY DECORATED PORCELAIN CABARET
Comprising: a tazza-form circular tray, drum teapot and sugar bowl, and six cups and saucers; the teapot spout chipped. Rich Imari floral decoration in blue, red, and gold. [Lot.]
- 75- 15. LIMOGES DECORATED PORCELAIN GAME SERVICE
Comprising: oval platter and twelve plates, decorated with various species of game birds; apricot *marli*. Some chipped. (*Arliss*)
- 10- 16. ROGERS TRANSFER-DECORATED STAFFORDSHIRE VEGETABLE SERVICE
Comprising: four segmental dishes and a footed sauce boat, the covers with lion-head finials; decorated in black with a wreath of flowers enclosing a panel of *chinoiserie*. Some repaired and chipped. [Lot.] (*Arliss*)
- 75- 17. SEVEN DECORATED IRONSTONE CHINA PLATTERS *Circa 1840*
Graduated platters decorated with the Imari floral pattern in green, cobalt blue, *rouge de fer*, and gold. Repaired. [Lot.] (*Arliss*) *Lengths, 10 to 17 inches*
- 30- 18. TWO LIMOGES PORCELAIN PART SERVICES
Rose-bordered pattern comprising: twelve assorted plates, four saucers, twelve demitasses, twelve ecuelles and oval tray, compote, two fruit bowls, and cuspidor. Gold-rimmed service comprising: twenty-four assorted plates, ten teacups and ten saucers, teapot, covered sugar bowl, milk pitcher and waste bowl. Some chipped. [Lot.] (*Sutton*)
- 30- 19. LOT OF TABLE PORCELAINS
Comprising: eleven Limoges oyster plates; twelve Paris dessert plates with *bleu du Roi* and gold borders; and six Dresden porcelain ramekins with saucers. [Lot.] (*Sutton*)

SATSUMA WARE AND CHINESE
PORCELAINS

20. TWO SATSUMA COVERED JARS AND AN INCENSE BURNER

30- Ovoid jar decorated in slight relief; globular jar with broad pleated rim; tripod incense burner with *kylin* finial. (Sutton)
Heights, $5\frac{1}{2}$ and $9\frac{1}{2}$ inches

21. SATSUMA BOWL

7⁵⁰ Painted in black, red, and gold with the god of War and an attendant, the border with gilded *kylin* reserves; on three elephant-head feet, one damaged. (Sutton) Diameter, $8\frac{1}{2}$ inches

22. TWO SATSUMA JARDINIÈRES AND A VASE

15- One tub-shaped, decorated with flying birds; a flowerpot with tray; and hexagonal vase. [Lot.] (Sutton)
Heights, 7 to $12\frac{1}{4}$ inches

23. TWO SATSUMA STATUETTES

37⁵⁰ Figure of a priest in flower-decorated robe, holding a scroll; and boy perched upon a trumpeting elephant. [Lot.] (Sutton)
Heights, 14 and $10\frac{1}{2}$ inches

24. THREE SATSUMA VASES

7⁵⁰ With floral and figure decoration, one imperfect. [Lot.] (Sutton)
Heights, $9\frac{1}{2}$ to 15 inches

25. THREE SATSUMA VASES

45- Pair of two-handled ovoid vases decorated with groups of deities; and tall baluster vase with floral decoration. [Lot.] (Sutton)
Heights, $11\frac{1}{2}$ and 18 inches

26. SIX IMARI PORCELAIN PLATES

XVIII Century

17⁵⁰ Decorated in the *famille verte* colors and gilding with a diapered medallion surrounded by six leaf plaquettes.
Diameter, $8\frac{1}{2}$ inches

27. CHERRY RED BOTTLE

Ch'ien-lung

2⁵⁰ Ovoid, with tall chimney neck and coated with a smooth dark red glaze. (Sutton)
Height, $13\frac{1}{4}$ inches

28. FIVE-COLOR POTICHE WITH COVER *Wan Li*
 12 ⁵⁰ Decorated in the *wu-ts'ai* colors with mandarins playing *go*, and figures of racing banner-bearers. Repaired. *Height, 16 inches*
29. BLUE AND WHITE SAN KUO BOTTLE *Ch'ien-lung*
 22 ⁵⁰ Depressed body with tall flaring neck, painted in underglaze blue with collars of diaper lappets and the Three Fruits (*san kuo*). (*Sutton*) *Height, 13 inches*
30. SATSUMA CYLINDRICAL VASE
 20- With panoramic scene of Immortals upon the Blessed Isles, between diaper borders. (*Sutton*) *Height, 24 inches*
31. FIVE-COLOR JAR WITH COVER *Wan Li*
 22 ⁵⁰ Decorated in blue, red, green, yellow, and aubergine with two panels of *kylin* amid clouds and rockery, bordered with floral diapers, and about the shoulder with a collar of lappets; with original hat cover rimmed in metal. (*Sutton*)
Height, 14³/₄ inches
32. SATSUMA KORO AND PAIR QUADRILATERAL VASES
 30- Tripod incense burner decorated with family groups in landscape, *Fu-dog* finials; vases with floral and bird designs. [*Lot.*] (*Sutton*) *Heights, 15 and 9¹/₂ inches*
33. FAH WA THREE-COLOR TEMPLE JAR WITH SLIP DECORATION *Ming*
 70- Wide-mouthed baluster jar glazed deep blue, with reserved decoration in raised white slip of deities and genii, lotus and emblems of the Hundred Antiques, in blue, turquoise, and buff. Neck has been filed. Teakwood cover and stand. (*Sutton*)
Height, 18 inches
- [See illustration on page 28]
34. TWO MONOCHROME VASES *Ch'ien-lung*
 37 ⁵⁰ Quadrangular two-handled bronze-form vase with 'iron rust' glaze; and green baluster-form 'tea dust' jar. (*Sutton*)
Heights, 14¹/₄ and 15 inches

35. WU-TS'AI BEAKER

H'an Li

40- Cylindrical vase with flaring neck, decorated in the Ming five colors with an audience scene in the house of a mandarin, and about the base with a cluster of ripe pomegranates; upon a molded median band with sprays of chrysanthemums. The lip is rimmed in metal. (*Sutton*)

Height, 21 3/4 inches

36. FAMILLE VERTE FISH BOWL ON CARVED AND GILDED STAND

17-⁵⁶ Enameled on a white ground with panels of blossoms and nelumbium plants between diaper borders; on leaf-carved tripod hung with festoons.

Total height, 35 inches; diameter of bowl, 21 inches

37. PAIR FAMILLE VERTE FISH BOWLS

20- Enameled with scattered *mei* blossoms on a green ground, with reserves of flowers, fruit, and utensils. *Diameter, 16 1/2 inches*

38. CANTON FAMILLE ROSE MANDARIN PORCELAIN
DINNER SERVICE

85- Comprising: twenty-three dinner plates, twenty-three soup plates, eighteen dessert plates, sixteen berry dishes, twelve tea-cups and eight saucers, seventeen demitasses and seventeen saucers, seven oval platters, four shaped dishes, four relish dishes, soup tureen, two small tureens, four covered vegetable dishes, two sauce boats, salad bowl, two compotes, two fruit bowls with trays, and milk pitcher. Some chips. [Lot.] (*Sutton*)

39. LOT OF CHINESE FAMILLE ROSE PORCELAIN

30- Eighteen Canton fruit plates, covered bowl with tray, two quatrefoil bowls, and beaker-form vase. Decorated with figure and floral reserves. [Lot.] (*Sutton*)

40. LOT OF CANTON FAMILLE ROSE PORCELAIN

10- Fruit bowl and nine small berry dishes, some chipped; quadrilateral *jardinière* with gilded leaf handles, repaired; baluster vase lamp fitted for electricity; and small jar. [Lot.] (*Arliss*)

41. JAPANESE FAMILLE ROSE PORCELAIN TEA AND COFFEE SERVICE

30- Comprising: nineteen plates, eighteen cups and eighteen saucers, teapot, coffee pot, covered sugar bowl, two milk pitchers, and two bowls; and ten assorted Canton dessert plates. Some chipped. [Lot.] (*Sutton*)

42. A COLLECTION OF JAPANESE PORCELAIN AND POTTERY SAKE AND TEA POTS

37 ⁵⁰ Examples of Kyoto, Satsuma, Kaga, and other wares, some with slight chips. In all, about one hundred pieces. [Lot.] (*Sutton*)

SILVER AND SILVER-PLATED WARE

43. OLD SHEFFIELD PLATE AND CUT GLASS CRUET AND LIQUEUR STAND

30- Cruet fitted with seven condiment bottles, three mounted in silver; and liqueur stand with three square decanters. [Lot.] (*Arliss*) *Heights, 9½ and 10½ inches*

44. OLD SHEFFIELD PLATE FRUIT BOWL AND FOUR CANDLESTICKS

12 ⁵⁰ Round bowl on high foot, the edges chiseled with a floral design; two baluster-form candlesticks, and pair cylindrical telescopic candlesticks. [Lot.] (*Arliss*)

45. PAIR STERLING SILVER TRUMPET VASES

35 Tapering vase chiseled with upstanding acanthus leaves, on star-pointed foot. (*Thomas*) *Height, 9 inches*

46. SILVER-MOUNTED SHAGREN TABLE MIRROR AND DESK BOX

50- The mirror with strapwork applique and mascaron cresting in the Louis XIV style; oblong desk box with hinged covers, containing two inkwells and a miniature globe. [Lot.] (*Sutton*)

47. SET OF FOUR GEORGE III REPOUSSÉ SILVER CANDLESTICKS
S. C. Younge & Co., Sheffield, 1816-18
 60- Quadrilateral tapered and knopped shaft, on round foot; *repoussé* with C-scrolls, shells, and acanthus leafage. Monogrammed. *Height, 11½ inches*
 [See illustration on page 59]
48. PAIR SILVER TABLE CANDELABRA IN THE
 QUEEN ANNE TASTE *Dutch, XVIII Century*
 90- Octagonal balustered and knopped stem supporting two scrolled arms with *bobêches*; octagonal foot. (*Sutton*) *Height, 12¾ inches*
49. SET OF FOUR AJOURÉ GILDED SILVER CANDLESTICKS
Louis XV Style
 90- Knopped baluster-shaped stem formed as figure of amor, on lobed base pierced and chased with rococo ornament. *Height, 14½ inches*
50. AJOURÉ GILDED SILVER COMPOTE *Louis XV Style*
 60- *En suite* with the preceding. Richly pierced and chased with figures, scrolls, and festoons of flowers; supported by four winged amors. *Width, 16 inches*
51. PAIR REPOUSSÉ GILDED SILVER CASTERS *Louis XV Style*
 50- *En suite* with the preceding. *Height, 8½ inches*
52. AJOURÉ GILDED SILVER FRUIT BOWL
 AND SWEETMEAT DISH *Louis XV Style*
 80- *En suite* with the preceding. With richly pierced and festooned lattice borders, and *repoussé* with groups of sporting putti. [Lot.] *Widths, 14½ and 9 inches*
53. REPOUSSÉ SILVER COFFEE POT AND PAIR ADAM
 CANDLESTICKS
 40- Pear-shaped coffee pot with tall neck, *repoussé* with a floral design; tapered candlestick in the Adam taste, of oval section. Birmingham, 1855. [Lot.] (*Thomas*) *Heights, 10 and 11¾ inches*

54. ENGRAVED SILVER-PLATED TWO-HANDLED TRAY

The Meriden Co., Conn.

17⁵⁰ Shaped tray engraved with a rosetted lattice within a border of foliations, the rim *repoussé* with a Renaissance design. Monogrammed. (*Sutton*) *Length, 32 inches*

55. PAIR SILVER-PLATED TABLE CANDELABRA *Georgian Style*

50 - With round tapering shaft, serpentine square base, and four reeded and twisted arms for lights; *repoussé* floral borders. *Height, 19¼ inches*

56. PAIR SILVER-PLATED WALL SCONCES *Georgian Style*

40 - Oval plaque chased with border of leafage and supporting three scrolled girandole arms for lights. *Height, 18½ inches*

57. SILVER-PLATED BREAKFAST SERVICE

15 - Hot water urn with spirit burner, teapot, sugar bowl, and creamer, and six eggcups with stand; assembled lot. [Lot.] (*Arliss*)

58. PAIR SILVER-PLATED COVERED ENTRÉE DISHES

25 - Oval dish with reversible cover having lock handle; strapped reeded edges. (*Arliss*) *Length, 11¼ inches*

59. LOT OF STERLING SILVER

20 - Pair of *repoussé* silver mustard pots with blue glass liners; small plain cocktail shaker; and six chased silver bouillon spoons. [Lot.] (*Arliss*)

60. LOT OF SILVER TABLE WARE

27⁵⁰ Sèvres style porcelain dish mounted on pierced and *repoussé* silver base; silver-plated basket; pair of sterling silver flower vases by Black, Starr & Frost; and *repoussé* sterling silver two-handled mug, monogrammed. [Lot.]

61. PAIR ADAM SHEFFIELD PLATE CANDELABRA
AND PAIR COVERED URNS

95- Fluted three-light Adam candelabrum, with tapered vasiiform stem of oval section; ovoid urn formed of a wire lattice, with two lion-mask ring handles, on square base. [Lot.] (Thomas)
Heights, 22 and 15½ inches

[See illustration of candelabra on page 63]

62. LOT OF SILVER TABLE WARE

45- Salver with scalloped edge, monogrammed; pierced cruet with pair of glass bottles; and chamber candlestick, crested. [Lot.] (Thomas)

63. LOT OF STERLING SILVER

60- Latticed cake tray, monogrammed; English silver table bell; glass bowl mounted in silver, by Tiffany & Co.; hand mirror and three cut glass jars mounted in chased silver, monogrammed. [Lot.] (Thomas)

64. LOT OF SILVER-PLATED TABLE WARE

45- Oval tray with two leaf and volute handles, on four leaf feet; oval vegetable dish with three compartments, crested; two oval cigarette boxes; two salvers; cocktail shaker; four latticed salts with blue glass liners and three spoons; and matchbox holder. [Lot.] (Thomas)

65. LOT OF SILVER-PLATED WARE

0 Including cylindrical bowl perforated with voluted scrolls; two two-handled dishes, two coasters, crumb brush and scoop, and an assortment of flat ware and servers. In all, about fifty-four pieces. [Lot.] (Arless)

JAPANESE NETSUKE AND
CARVED IVORIES

66. FOUR JAPANESE CARVED IVORY NETSUKE

70- A ryot and child finding a lost dog; and three groups of dogs, children, and crustaceans, the last signed. [Lot.] (Sutton)

- 35 - 67. SIX JAPANESE CARVED IVORY NETSUKE
Peasant woman and child; Girogin and crane; bundle of animal
and human masks, signed; two birds; branch of two peaches;
and a turtle on rock. [Lot.] (Sutton)
- 80 - 68. SEVEN JAPANESE IVORY NETSUKE
Two bird groups, two bear cub groups, a pagoda shrine in the
clouds, and two *manju* with chiseled bronze and *shakudo*
plaques. [Lot.] (Sutton)
- 50 - 69. THREE JAPANESE CARVED IVORY GROUPS
A group of actors and musicians surrounding a gorgeously
caparisoned elephant, signed; a *netsuke* composed of a bundle
of masks; and a group of three squatting ryots. [Lot.] (Sutton)
- 45 - 70. THREE IVORY TEA JARS
One decorated in gold lacquer with insects and bands of key
fret; another with red and green diaper bands and foliations;
the third pierced and carved with peony and bird panels. [Lot.]
(Sutton) *Heights, 2 3/4 and 3 3/4 inches*
- 35 - 71. TWO JAPANESE CARVED IVORY GROUPS
Amusing group of three demons; and a group of three actors,
the victor bending over to grasp the sword of the vanquished.
Signed. (Sutton) *Heights, 1 3/4 and 2 1/4 inches*
- 30 - 72. THREE JAPANESE IVORY BOXES
Box carved in the form of a knotted tree trunk, the cover sur-
mounted by a woodman seated on a bundle of faggots, signed;
box and tea jar with lacquer decoration of dragon, birds, and
flowers. [Lot.] (Sutton) *Heights, 2 1/2 to 4 3/4 inches*
- 30 - 73. JAPANESE CARVED IVORY GROUP
A swordmaker squatting by his anvil tempering a blade, assisted
by his wife standing beside him. Signed. (Sutton)
Height, 2 3/4 inches

74. TWO JAPANESE CARVED IVORY GROUPS

30. A swordmaker at his trade assisted by his wife, and an itinerant cheapjack exhibiting an ape upon a perch, a small boy at the foot. Signed. (Sutton) Heights, $2\frac{3}{4}$ and $3\frac{1}{2}$ inches

75. TWO JAPANESE CARVED IVORY GROUPS

75. A bearded sage, probably Girogin, with a stag, signed; and a peddler with his sack upon his back, two mice climbing over him. (Sutton) Heights, $2\frac{3}{4}$ and 2 inches

76. JAPANESE CARVED IVORY GROUP AND FIGURINE

40. *Daimio* squatting with his elbow resting on a pillow, a lady standing beside him with his bow; and figure of the deity Bis-jamon holding a pagoda. Signed. (Sutton) Height, $2\frac{3}{4}$ inches

77. JAPANESE CARVED IVORY GROUP

35. A *kojiki* woman leaning upon a staff, her sleeping infant carried at her breast, two older barefoot children beside her, beneath an umbrella. (Sutton) Height, 4 inches

[See illustration on following page]

78. JAPANESE CARVED IVORY GROUP

50. Figure of a *daimio* in full armor with quiver of arrows at his back, and holding his bow, an armored attendant kneeling beside him pointing over a hill. Signed. (Sutton) Height, $3\frac{1}{2}$ inches

[See illustration on following page]

79. JAPANESE CARVED IVORY GROUP

35. Figure of a *daimio* squatting on the ground, a quiver of arrows slung at his back, guarded by two bearded attendants standing before him with sword and bill. Signed. (Sutton) Height, 4 inches

[See illustration on following page]



[NUMBERS 77-84]

80. JAPANESE CARVED IVORY FIGURINE

A court lady richly robed in embroidered kimono, with long flowing scarf and phoenix headdress, holding a gold-decorated amber fan. Signed. (Sutton)

Height, $4\frac{3}{4}$ inches

50-

[See illustration]

81. JAPANESE CARVED IVORY GROUP

A *kojiki* woman leaning on a staff, her sleeping infant at her breast, and two older children before her, begging alms. Signed. (Sutton)

Height, $5\frac{3}{4}$ inches

50-

[See illustration]

82. JAPANESE FINELY CARVED IVORY GROUP

80- Depicting five Immortals upon the Blessed Isles, a woman bearing a tabouret of refreshments, a man seated on the ground playing a mandolin; resting on the waves is a coiled scaly dragon. Beneath is an inscription, and signature on mother-of-pearl seal. (Sutton) Height, $4\frac{3}{4}$ inches

[See illustration]

83. JAPANESE CARVED IVORY GROUP

40- Figures of two armored men robed in kimonos, one beating off a wolf which has grasped the robe of a kneeling court lady. signed. (Sutton) Height, 5 inches

[See illustration]

84. JAPANESE FINELY CARVED IVORY FIGURINE

70- Figure of an Immortal wrapped in a voluminous windblown robe, his breast bared, and wearing earrings. Signed. (Sutton) Height, 6 inches

[See illustration]

85. TWO JAPANESE CARVED IVORY FIGURINES

80- Figure of a ryot in robe with collar of leaves, a three-legged toad at his feet; and deity with upper body bare, four child attendants brushing his skirt, signed; chipped. (Sutton) Heights, $4\frac{1}{2}$ and $3\frac{3}{4}$ inches

86. FIVE JAPANESE DECORATED IVORY ORNAMENTS

30- Two *natsume*, rouge box, trinket box, and *sake* cup; decorated in gold lacquer with floral and dragon designs. [Lot.] (Sutton)

JAPANESE INRO, LACQUER, SMALL
ORNAMENTS, WEAPONS, AND BRONZES

87. FIVE TSUBA

20- Three in bronze with fish and floral decoration; one in *shakudo* with a pierced diaper; and one in *shibuichi* chiseled with figures of apes. [Lot.] (Sutton)

88. FIVE KOZUKA
 15 Three in silver engraved with floral decoration, and signed; one in *shakudo* embossed with gold and *shakudo tsnba*; and one in bronze with figures of ape-faced actors. (*Sutton*)
89. TWO FINELY CARVED CHRYSANTHEMUM BOWLS
 45 One in translucent mottled green moss jade, the other in rhinoceros horn. (*Sutton*) Diameters, $4\frac{1}{4}$ and $3\frac{1}{2}$ inches
90. TWELVE SILVER, SHAKUDO, AND SHIBUICHI BIBELOTS
 30- Including cups, bowls, baskets, boxes, and a miniature cabinet, with various decoration. [Lot.] (*Sutton*)
91. FOURTEEN BLACK AND GOLD AND DECORATED LACQUER ORNAMENTS
 100- Eight assorted miniature boxes; red and gold lacquer *sake* cup; two combs set with corals; and three wood cosmetic boxes decorated with mother-of-pearl and porcelain. [Lot.] (*Sutton*)
92. LOT OF BRONZE, SHAKUDO, AND SHIBUICHI ORNAMENTS
 30 Including a carp with ball in its mouth, six gold and *shakudo* sword mounts, miniature *inro*, and other pieces, seventeen in all. [Lot.] (*Sutton*)
93. TWELVE BRONZE, SHIBUICHI, AND SHAKUDO ORNAMENTS
 30- Including opium pipes, one in the form of a gilded scaly dragon, a mandolin, a box, a small sampan with fisherman, and others. [Lot.] (*Sutton*)
94. THREE DECORATED GOLD LACQUER INRO
XVIII-XIX Century
 32 ⁵⁰ Three- and four-section *inro*, decorated in *taka-makiye* and *togidashi* with a pavilion, mounted warriors, and trees in blossom. (*Sutton*)
95. TWO BLACK AND GOLD LACQUER INRO *XVIII Century*
 25 Four-section *inro* in glossy black and *nashiji* lacquer decorated with pheasants in a wooded grove, with carved figure *netsuke*; and three-section *inro* decorated with cranes amid bulrushes. (*Sutton*)

20- 96. TWO BLACK AND GOLD LACQUER INRO XVIII-XIX Century
Four-section, of glossy black lacquer with *togidashi* and embossed decoration, one of a boat seen among the rushes, the other a rocky shoreline with waves and reeds, with carved ivory *mauju-netsuke*. (Sutton)

15- 97. THREE GOLD LACQUER INRO
Four-section *inro* of *nashiji* lacquer decorated with a songbird on a branch, with carved *netsuke* figure of Hotei; five-section *inro* and flat oval *inro* in decorated gold lacquer. (Sutton)

12 50- 98. THREE CHINESE CARVED CINNABAR LACQUER INRO
One four-section, carved with peonies, with carved ivory *Fudog netsuke*; another carved with groups of children playing; and a two-section bottle-form *inro* carved with peony branches. (Sutton)

15- 99. FOUR GOLD LACQUER INRO
Three-, four-, and five-section *inro*, one with *nashiji* mosaic ground decorated with symbols and utensils, the others in *takamakiye* with floral decoration. [Lot.] (Sutton)

17 50- 100. TWO BLACK AND GOLD LACQUER INRO XVIII Century
Four-section, of black lacquer with *togidashi* and embossed decoration of mountainous islands, one with an arched bridge; one with carved equestrian group as *netsuke*. (Sutton)

25- 101. TWO INRO
Three-section ivory *inro* carved with children playing in a field; and black and gold lacquer three-section *inro* with embossed decoration of dragons amid clouds. With carved ivory crustacean *netsuke*. (Sutton)

17 50- 102. THREE BLACK AND GOLD LACQUER INRO XVIII-XIX Century
Four- and five-section, with embossed chrysanthemum and bird decoration. (Sutton)

103. FOUR DECORATED GOLD LACQUER BOXES
 30 - Cabinet of three drawers, and three two-section boxes with covers; with floral decoration on *nashiji* and gold lacquer grounds. [Lot.] (Sutton)
104. FIVE BLACK AND GOLD LACQUER TEA JARS
 37⁵⁰ - Round *natsume* with various floral, *kirin*, and diaper decoration. [Lot.] (Sutton)
105. LOT OF CHINESE CARVED CINNABAR LACQUER ORNAMENTS
 20 - Comprising oval tray and three cosmetic boxes, one with stand, and sphere on pierced tabouret: carved with sages before a shrine, dragons, flowers, and diaper frets. [Lot.] (Sutton)
106. FIVE DECORATED GOLD LACQUER BOXES
 45 - Including peach, fan, and keg-shaped boxes, in *nashiji* and gold lacquer with figure and landscape decoration. [Lot.] (Sutton)
107. THREE BLACK AND GOLD LACQUER FAN BOXES
 60 - One in *nashiji* lacquer, decorated with flying cranes; and two with lattice diapers and swastika and butterfly medallions. [Lot.] (Sutton) Lengths, $9\frac{1}{4}$ to $18\frac{1}{4}$ inches
108. FIVE DECORATED LACQUER ORNAMENTS
 35 - Inlaid trinket box with fitted interior, two aventurine lacquer boxes, and two sword racks. [Lot.] (Sutton)
109. TWO FINE CHINESE BLACK AND GOLD LACQUER BOXES
 55 - Chess and backgammon board with box of carved ivory counters; and jewel casket decorated with groups of actors performing before an audience. [Lot.] (Sutton) Lengths, 22 and 10 inches
110. TWO DAGGERS
 45 - One with leather scabbard and hilt, the other with black and *nashiji* lacquer scabbard and braid hilt; with silver *kozuka* and *fuchi-kashira*. (Sutton) Lengths, $10\frac{3}{4}$ and $9\frac{1}{4}$ inches

111. TWO DAGGERS

75- One with ribbed green lacquer scabbard, and blue silk hilt with fine gold and *shakudo* dragonflies; silver *kozuka*, *kogai*, and mounts. The other with brown lacquer scabbard with silver mounts; braided sharkskin hilt with *shakudo* and gold *fuchikashira* and *tsuba*. (Sutton)

Lengths of blades, $8\frac{1}{4}$ and 9 inches

112. TWO DAGGERS

60- One with black and gold lacquer scabbard and hilt, with silver mounts; and one with ruby lacquer scabbard, with fine chased silver *kogai*, *kozuka*, and mounts. (Sutton)

113. SHORT SWORD AND DAGGER

65- The sword with scabbard in green and black *nashiji* lacquer, and braided sharkskin hilt with two bronze and gold ornaments, iron *kozuka* and bronze *tsuba*; the dagger with shagreen lacquer scabbard and hilt, with silver *kogai*, *kozuka*, and mounts. (Sutton)

114. KOREAN BRASS CANDLESTICK AND PAIR INCENSE BURNERS

35- With engraved designs; two-handled incense bowls with pierced covers. [Lot.]

Heights, $28\frac{1}{2}$ and $11\frac{1}{2}$ inches

115. TWO CHINESE BLACK AND GOLD LACQUER CABINETS

35- Small cabinet enclosed by double doors, and tea chest fitted with engraved pewter compartments. [Lot.] (Sutton)

Heights, $15\frac{1}{2}$ and 8 inches

116. CHINESE BLACK AND GOLD LACQUER BOX
AND TWELVE PLATES

25- 'Book' box fitted for writing, and decorated with groups of actors performing on pavilion terraces. [Lot.] (Sutton)

117. THREE JAPANESE CLOISONNÉ ENAMEL PLAQUES

25- Exhibiting cranes, ducks, and pheasants in landscapes, before turquoise blue backgrounds. (Sutton) Diameter, 18 inches

118. TWO JAPANESE CLOISSONNÉ ENAMEL PLAQUES
AND PAIR PHOTOGRAPH FRAMES

17⁵⁰ Decorated with cranes, butterflies, and flowers, on turquoise blue backgrounds. [Lot.] (*Sutton*)

119. PAIR JAPANESE BRONZE VASES

35- Chiseled in high relief with serpents and foliations; broad flanged rim. (*Sutton*) *Height, 16½ inches*

120. TWO JAPANESE BRONZE VASES

25- Pyriform vase modeled with a carp, and inverted trumpet-form vase with coiled dragon in high relief. [Lot.] (*Sutton*)
Height, 11 inches

121. JAPANESE BRONZE BOWL AND BIRD FIGURINE

25- Lobed melon-form bowl enriched with two chrysanthemum clusters, and hollow figure of a goose with detachable wing cover. [Lot.] (*Sutton*)
Height of figurine, 13½ inches; diameter of bowl, 12½ inches

122. TWO JAPANESE BRONZE VASES

10- Baluster vase with two bird monster handles, ornamented with bands and lappets of cloisonné enamel; and bronze bamboo vase. [Lot.] (*Sutton*) *Heights, 14 and 13 inches*

123. BRONZE OIL LAMP AND CHINESE CLOISSONNÉ ENAMEL CLOCK

45- Japanese bronze two-handled dragon bowl, fitted as lamp; and Chinese cloisonné enamel clock suspended in pierced gilded bronze and cloisonné enamel stand. [Lot.] (*Sutton*)
Heights, 16½ and 19½ inches

124. FIVE JAPANESE BRONZE ORNAMENTS

15- Bronze and cloisonné enamel two-handled vase lamp, fitted for electricity; bronze tripod incense burner with animal finial; teapot, and pair of baluster vases. [Lot.] (*Arliss*)

125. LOT OF CHINESE BIBELOTS

Kakemono on silk depicting children in a field; two black and gold lacquer fan boxes containing richly carved ivory fans; and cedar jewel casket finely carved with sages and attendants before shrines in a wooded pine landscape. [Lot.] (Sutton)

126. LOT OF JAPANESE DECORATED LACQUER AND WOOD ORNAMENTS

Black lacquer writing box with *nashiji* interior; decorated walnut box; two wood plaques with floral decoration, and three red and gold lacquer dishes. [Lot.] (Sutton)

FURNITURE AND DECORATIONS

127. NINE PECTORAL CROSSES AND MEDALLIONS

Assorted, with painted and enamel miniatures of saints; ikon, and oval *grisaille* miniature of a Roman hero. [Lot.]

128. TWO ITEMS OF ARLISSIANA

Bronze bust of George Arliss as the Rajah in 'The Green Goddess', signed Ivan Simpson; and ovoid vase with wistaria decoration by George Arliss, signed with initials. [Lot.]
(Arliss) *Heights, 5¾ and 10½ inches*

129. ENGRAVED STEEL MASONIC SWORD AND ACCOUTREMENTS AND GOLD-HANDLED EBONY CANE

The sword by Ames Mfg. Co., Chicopee, Mass., engraved with Renaissance ornament and inscribed; velvet shoulder band, plumed tricorn, and other accessories, with applied emblems of a benevolent order. The cane with engraved gold handle and dated 1867. [Lot.] (Sutton)

130. SERVICE OF HORN-HANDLED FRENCH STEEL TABLE WARE

Twelve dinner knives, twelve fruit knives, and carving knife and fork; in cases. [Lot.] (Sutton)

131. THREE TABLE LAMPS

25⁵⁰ Dresden porcelain group, with shade; silver-plated two-handled urn, with shade; and Paris decorated porcelain urn in bronze tripod stand. Fitted for electricity. [Lot.] (Thomas)
Heights, 13, 17, and 18½ inches

132. BRONZE DORÉ AND GRIOTTE MARBLE CLOCK GARNITURE

42⁵⁰ Comprising: wreathed and festooned clock set in elaborate shaped plinth, surmounted by a seated classic female figure; and pair of ovoid urns with two bearded mascarons handles. [Lot.] (Sutton)
Heights, 35 and 20 inches

133. FOUR RAPIERS AND TWO KNIVES

12⁵⁰ Steel rapiers with wire-wrapped grips, one imperfect; and two knives in bone sheaths, one engraved with figures and birds. [Lot.]

134. LATE SHERATON INLAID MAHOGANY CLOCK WITH BRACKET
English, XIX Century

40- Arched clock with urn finial and brass inlays; striking movement. (Thomas)
Height of clock, 21 inches

135. BRONZE AND BLACK MARBLE CLOCK GARNITURE

Puss Comprising clock supported by classic draped female figure, and pair of chiseled bronze covered urns; on black marble plinths. [Lot.] (Sutton)
Heights, 36 and 12½ inches

136. TIFFANY GLASS AND BRONZE TABLE LAMP

37⁵⁰ Domed beehive shade in favrile glass, on rustic bronze shaft. Fitted for electricity. (Thomas)
Height, 27 inches

137. CHIPPENDALE MAHOGANY POLE SCREEN
WITH PETIT POINT PANEL

190- Carved claw-and-ball-foot tripod with panel of fine *petit point*, circa 1830, worked with a bowl of flowers and grapes. (Thomas)
Height, 51 inches
From Arthur S. Vernay, New York

138. MAHOGANY CANTERBURY AND CANDLESTAND *Sheraton Style*

40- Three-rack canterbury with single drawer; and octagonal tilting top stand inlaid with elmroot. (Thomas) [Lot.]

139. LATE SHERATON GILDED OVERMANTEL MIRROR
AND PAIR BRASS ANDIRONS

Three-section mirror bordered with ringed and split balusters;
and pair hexagonal acorn-top andirons. [Lot.]
Height of mirror, 25 inches; length, 5 feet

140. TWO TURNED MAHOGANY TRIPOD TABLES *Georgian Style*

Circular tilting-top table on turned column and snake-foot tri-
pod; and small candlestand. [Lot.] (*Arliss*)
Heights, 30 and 21 inches

141. PAIR CARVED BEECHWOOD CANNÉ FAUTEUILS *Régence Style*

Leaf-carved cartouche-shaped back, open arms with armpads;
carved cabriole legs.

141A. MAHOGANY OCCASIONAL TABLE *Sheraton Style*

With tray top and single drawer. (*Thomas*)
Height, 30 inches; width, 13 inches

142. ACAJOU TEA TABLE, MOUNTED IN BRONZE DORÉ

Louis XV Style

Oblong, with loose tray top, caned sides, and shelf.
Height, 32 inches; width, 24 inches

143. PARCEL-GILDED WALNUT AND CANED FAUTEUIL

Régence Style

Cabriole-leg frame, enriched with carved and gilded cabochons
and leafage. Green brocade armpads. (*Sutton*)

144. FOUR CARVED AND LAQUÉ CHAIRS

Sheraton Style

Two armchairs and two side chairs. Square latticed back and
molded tapering square legs. *Laqué* leaf green. (*Thomas*)

145. GILDED OVAL WALL MIRROR

Adam Style

Surmounted by a bowknotted rope ornamented with a ram's
head and a flaming urn. (*Thomas*)
Height, 51 inches; width, 20 inches



[NUMBER 146]

146. PAIR CAROLEAN FINELY CARVED WALNUT
AND NEEDLEPOINT ARMCHAIRS

180-

Seat and square back in *tete de nègre gros point* developing russet leaf scrollings enclosing fine *petit point* cartouches with figure of Pomona in an orchard, flowers and exotic birds: acanthus-scolled arms, turned legs and stretchers, the frontal stretcher carved with birds pecking at grapes.

[See illustration of one]

147. WALNUT AND SILK EMBROIDERY BOUDOIR SCREEN

Louis XVI Style

40 Three-fold screen with beveled glass panels and inset with ivory silk finely embroidered with festooned horticultural medallions. Height, 5 feet 4 inches; width, 51½ inches

148. SHERATON GILDED OVERMANTEL MIRROR

10- Triple mirror with Composite pilasters and the frieze molded with an anthemion supporting leaf *rincaux*.

Height, 38 inches; length, 59 inches

149. CARVED WALNUT ARMCHAIR AND PAIR SIDE CHAIRS

French Renaissance

40- Stretched columnar frames, reconstructed; covered in blue brocatelle and green checkered armure respectively. [Lot.]

150. TWO CARVED MAHOGANY TABLES

Chippendale Style

Shaped table with leaf-carved rim, on four tapered square twin supports carved with fret ornament; and square table with one drawer and flower-carved frieze, on square stretched legs.

35 (Thomas) Height, 28½ inches; widths, 36½ and 24 inches

151. CARVED MAHOGANY LECTERN AND PAIR TORCHÈRES

Chippendale Style

60- Tripod lectern with fluted column and hinged desk; torchères with hexafoil top, on reeded and acanthus-carved baluster. [Lot.] (Thomas)

Heights, 40 and 50 inches

From Arthur S. Vernay, New York

152. PAIR CARVED WALNUT AND FLEMISH VERDURE TAPESTRY STATE CHAIRS

Louis XIV Style

120- Seat and tall canted back in old verdure tapestry; acanthus-carved and voluted arms, scrolled legs and H-stretcher.

153. EARLY AMERICAN MAHOGANY COMMODOE AND DRESSING MIRROR

50- Swell-front commode with two small and two long cockbeaded drawers; oblong dressing mirror with five small drawers. [Lot.] (Thomas)

Height, 36¾ inches; width, 35½ inches

Height, 25½ inches; width, 25 inches

- 20- 154. EARLY AMERICAN MAPLE CHEST OF DRAWERS
Bow front, having four drawers, flanked by turned pilasters; molded white marble top. *Height, 33 inches; length, 42 inches*
- 25- 155. VICTOR VICTROLA IN WALNUT CABINET
Serial No. VE 10-50 U 554. Equipped with automatic mechanism for the continuous playing of twelve records. With eight folios of records. (*Arless*) *Height, 49 inches; width, 48 inches*
- 50- 156. THREE CARVED MAHOGANY SIDE CHAIRS
English, Early XIX Century
Hepplewhite shield-back chair with strap beaker splat and square tapering legs; and pair Regency chairs, with panel back surmounted by a gadrooned dome, and turned and reeded round legs. [Lot.] (*Thomas*)
From Arthur S. Vernay, New York
- 45- 157. INLAID AND DECORATED MAHOGANY DRESSING CABINET AND BUREAU *Sheraton Style*
The cabinet with shield-shaped mirror between double cupboards, three drawers; the bureau with two small and four long drawers; leaf-carved round tapering legs. Decorated with floral ornament and putto medallions. [Lot.] (*Thomas*)
Height, 7 feet; width, 54 inches
Height, 59 inches; width, 43½ inches
- Pues 158. COLONIAL APPLEWOOD SAWBUCK TABLE
Oblong top, on X-shaped supports with cross stretcher.
Height, 29 inches; length, 48 inches
- 30- 159. INLAID MAHOGANY SWELL-FRONT CHEST OF DRAWERS *Sheraton Style*
With two small and three long drawers; banded in satinwood. (*Thomas*)
Height, 44 inches; width, 42 inches
- 25- 160. GEORGIAN INLAID OAK BUREAU *English, XVIII Century*
Rectangular case of five drawers in light oak banded with mahogany. Reconditioned.
Height, 33 inches; length, 34 inches



[NUMBER 161]

161. CHIPPENDALE FINELY CARVED MAHOGANY WINE TABLE

Circular top with beautiful *ajouré* gallery richly carved with leaf-scrollings and tilting on a stop-fluted support with acanthus-carved claw-foot tripod. (*Thomas*)

Height, 30 inches; diameter, 32½ inches

From Arthur S. Vernay, New York

[See illustration]

162. INLAID MAHOGANY PEMBROKE TABLE *Sheraton Style*

Oval top with two drop leaves. on tapered square legs, the kneeblocks inlaid with shell paterae. (*Sutton*)

Height, 28 inches; length open, 37½ inches



[NUMBERS 33 AND 163]

163. ACAJOU AND TULIPWOOD PARQUETERIE COMMODE

Louis XVI Style

165- Two-drawer commode, inlaid with a lattice and cube *parqueterie*, with tasseled bronze mounts. Gray Ste Anne marble top. (Sutton) Height, 33½ inches; length, 51½ inches

[See illustration]

- 163A. BIRD CAGE ON MAHOGANY STAND *Sheraton Style*
 Octagonal, with glazed sides. (*Thomas*)
Height, 35 inches; width, 18 inches
164. TWO CARVED AND GILDED OVAL WALL MIRRORS *Louis XVI Style*
 One crested by a crossed quiver and torch entwined with roses, the other by a ribbon bowknot. (*Arliss*)
Height, 57½ inches; width, 37½ inches
Height, 5 feet 1 inch; width, 28 inches
165. CARVED WALNUT LIBRARY TABLE *Gothic Style*
 Octagonal top on double H-shaped support carved with Gothic fenestral tracery. *Height, 29½ inches; length, 55½ inches*
166. CARVED OAK CRESCENCE *French Gothic Style*
 Cabinet with pilasters and double doors carved with Gothic figurines; undershelf with panel back carved with linenfold.
Height, 53 inches; width, 35 inches
167. CARVED MAHOGANY CHINA CABINET *Chippendale Style*
 With double glazed and latticed doors surmounted by a rococo cresting; two carved drawers on quadrangular legs. (*Thomas*)
Height, 8 feet 4 inches; width, 50 inches
168. EMPIRE PAINTED AND PARCEL-GILDED MARRIAGE BEDSTEAD *Rousillon, circa 1805*
 High urn-shaped headboard with gilded Empire ornament of kneeling cherubs flanking an amoristic trophy; painted green to simulate marble; round tapering legs.
Height, 7 feet 2 inches; width, 57½ inches
169. UPHOLSTERED EASY CHAIR AND SLIPPER CHAIR
 With back and seat cushions, and flowered apricot chintz slip covers. [Lot.] (*Thomas*)
170. GEORGIAN MAHOGANY CHEST OF DRAWERS
 In two sections; chest of five drawers with pierced brasses, on bracket base with one drawer. Assembled piece. (*Arliss*)
Height, 40 inches; width, 32 inches
 Collection of Lady Wellesley



[NUMBER 171]

171. REGENCY INLAID ROSEWOOD WRITING CABINET

English, Early XIX Century

35- Upper part fitted with numerous small drawers having ebony knobs enclosed by two doors; below, a drawer fitted for writing purposes. On voluted, tapered, and carved legs. Banded with amboyna wood. *Height, 4 feet 10 inches; width, 26 inches*

[See illustration]

172. PAIR MAHOGANY TWIN SLEIGH BEDSTEADS
 With scrolled panel headboard, and curved legs with paw feet.
 With box springs and mattresses. (*Thomas*)
 30- Height, 40 inches; width, 39 inches
173. UPHOLSTERED DUCHESS IN TAUPE TAFFETAS
 With loose back and seat cushions, and taupe taffetas slip covers. (*Thomas*)
 35-
174. DECORATED MAHOGANY BEDROOM SUITE *Sheraton Style*
 Comprising: double bedstead with spring, mattress, and two pillows; bureau with four drawers; shield-shaped dressing mirror; commode with three drawers and swivel mirror; bow-front dressing table with three drawers and swivel mirror; night table; bench and side chair. [Lot.] (*Arliss*)
 40-
175. MAHOGANY DINING ROOM SUITE
 Comprising: circular table with five extension leaves; buffet with four drawers and two cupboards; folding-top table; glazed china cabinet, two armchairs and four side chairs with leather seats. [Lot.] (*Arliss*)
 40
176. UPHOLSTERED DAMASK EASY CHAIR AND WALNUT COFFEE TABLE
 Easy chair with couched barrel back, covered in garnet floral brocatelle, short walnut cabriole legs; carved walnut trestle table with Portor marble top. [Lot.]
 30
177. MAHOGANY AND GREEN VELOURS EASY CHAIR AND FOUR LATE SHERATON CHAIRS
 Easy chair, with cabriole legs; armchair and three side chairs of Sheraton's Empire period, with green velours seats. [Lot.] (*Arliss*)
 45-
178. UPHOLSTERED SUITE IN PURPLE CUT VELOURS
 Comprising: settee, five easy chairs and foot rest; square and turned mahogany legs. [Lot.] (*Arliss*)
 25-

- 12⁵⁰ 179. MAHOGANY MUSIC CABINET AND INLAID BANJO
Shelved cabinet enclosed by door; banjo inlaid with mother-of-pearl, in green canvas case. [Lot.] (*Arliss*)
Height of cabinet, 39 inches; width, 20 inches
- 2⁵ 180. LOT OF WROUGHT-IRON AND BRASS FIREPLACE
AND HEARTH FURNISHINGS
Two grille fenders, mesh fire screen, pair of ball-top andirons, four iron fire tools with stand, four steel and brass fire tools, and brass warming pan with oak handle. [Lot.] (*Arliss*)
- 17¹⁰ 181. MAHOGANY BUFFET AND SLANT-FRONT DESK
Buffet with long drawer above three small drawers, on trumpet-turned stretched legs; the desk with four drawers, claw-and-ball feet. (*Arliss*)
Heights, 37½ and 39½ inches; length, 40 inches
- 20- 182. TWO WALL MIRRORS
Gilded overmantel mirror, the frieze with applied drapery swags; and small *laqué* mirror of the Louis XVI period with gilded bead moldings. [Lot.] (*Arliss*)
Height, 25½ inches; length, 58½ inches
Height, 35 inches; width, 18 inches
- 40- 183. UPHOLSTERED SOFA
Covered in sky blue taffetas. (*Thomas*) *Length, 7 feet*
- 20- 184. PAIR REGENCY ALABASTER URNS *English, Early XIX Century*
Ovoid vase carved with a collar of plantain leaves, on square plinth and Portor marble base. *Total height, 54 inches*
- 45- 185. PAIR WROUGHT IRON ANDIRONS AND FIREGUARD
Design of voluted strap scrollings. [Lot.]
Height of andirons, 30½ inches; length of fireguard, 55 inches
- 12¹⁰ 186. PAIR BRASS COLUMNAR ANDIRONS
Reeded baluster with urn top; festooned triliteral base with claw feet. *Height, 37½ inches*

187. TWO BLACK MARBLE MANTEL CLOCKS
On massive molded plinths. (Sutton) *Height, 13 inches*
188. TWO OIL LAMPS AND A PAIR OPALINE BLUE GLASS VASES
Cloisonné enamel vase, and two-handled ovoid painted tole vase, fitted as lamps with brass and gilded bronze mounts; and pair of opaline blue glass flower holders. [Lot.] (Sutton)
Heights, 11 to 22 inches

ORIENTAL RUGS

194. TWO TEKKE BOKHARA RUGS
Brick red field, woven with rows of small parti-colored octagons within borders of latchhooked dies and lozenges.
Lengths, 4 feet and 4 feet 8 inches; width, 2 feet 3 inches
195. ANTIQUE SEHNA RUG
Scarlet field woven with rows of floral 'pear' motives; narrow sapphire blue border. Needs repair.
Length, 6 feet 3 inches; width, 3 feet 10 inches
196. ANTIQUE 'RHODIAN' KULAH RUG
Hexagonal aubergine field, with turquoise spandrels and allover design of angular lotus arabesques; deep greenish blue border with an undulating serrated scarlet branch of carnations.
Length, 5 feet 3 inches; width, 4 feet 8 inches
197. PAIR KOTCHLI BOKHARA RUGS
Sang de boeuf field, woven with a *kotchli* or cross, superimposed on rows of tiny candelabra motives; diapered border of lozenges and serrated leaves.
Lengths, 4 feet 10 inches and 4 feet 5 inches; width, 3 feet 10 inches
198. KAZAK RUG
Crimson field divided into two sections, each with a large ivory, blue, and green 'tarantula' medallion. (Arliss)
Length, 6 feet 2 inches; width, 4 feet 3 inches

199. **TEKKE BOKHARA RUG**
 45 - Brownish red field woven with nine rows of three octagons
 particolored in scarlet, deep blue, and ivory, within geometrical
 borders. *Length, 5 feet 2 inches; width, 3 feet 9 inches*
200. **ZILLI SULTAN MEDALLION RUG**
 30 - Tan field, centred with a midnight blue hexagonal medallion
 between two pyramids surmounted by floral finials; ivory bor-
 der of urns of flowers. *Length, 6 feet 6 inches; width, 4 feet 2 inches*
201. **SAROUK RUG**
 35 - Tawny red field, reserved with an ivory hexagon and patterned
 with a tile rosette design; midnight blue floral border. *Length, 6 feet 5 inches; width, 4 feet*
202. **KASHAN MILLEFLEURS RUG**
 55 - Double-arched midnight blue field, with mazarine blue span-
 drels and brick red pendent medallion; woven with a *mille-*
fleurs design; brick-red border of diapered cartouches and
 arabesque scrollings. *Length, 6 feet 9 inches; width, 4 feet 2 inches*
203. **YEZDT KIRMAN RUG**
 40 - Ivory field woven with arabesqued creepers and four eight-
 pointed floral medallions; midnight blue floral border with an
 inscription of sacred poetry. *Length, 7 feet; width, 4 feet 6 inches*
204. **KASHAN RUG**
 65 - Hexagonal midnight blue field, with scarlet spandrels and
 cusped medallion, the whole patterned with floral arabesques;
 midnight blue border with undulating designs. *Length, 7 feet 5 inches; width, 4 feet 4 inches*
205. **KAZAK RUG**
 45 - Scarlet field exhibiting three large 'tarantula' floral medallions
 in blue, yellow, and ivory. (*Arliss*) *Length, 8 feet 3 inches; width, 4 feet 1 inch*

206. KASHAN MILLEFLEURS RUG

65- Double-arched midnight blue field with brick red spandrels and diapered medallion, the field enlivened with a *millefleurs* design repeated with variations in a deep blue border.

Length, 7 feet; width, 4 feet 6 inches

207. ANTIQUE FEREGHAN MILLEFLEURS RUG

70 Woven with an allover trellis enclosing a formalized floral design on a fawn ground with five narrow floral borders.

Length, 10 feet; width, 7 feet 1 inch

208. HEREKE ANIMAL CARPET

60- Apple green field, woven with cypresses, figures of pack camels and merchants, with wild animals pursuing game around the border of a pale bluish medallion of swimming fish and ducks; the ivory border with plaquettes with a recurrent figure of a running tiger wounded by an Arab. Partly of silk.

Length, 7 feet; width, 7 feet 9 inches

209. KULAH RUG

Circa 1820

65- *Odjaklik* with two stepped arches, tan field, and fawn floral spandrels; green and fawn floral guards and stripes.

Length, 7 feet 5 inches; width, 4 feet 5 inches

210. PERSIAN HERATI RUG

85- Midnight blue field, with a close Herati trellis design in scarlet, fawn, and ivory; ivory border of interlinked 'turtle' palmettes.

(Thomas) *Length, 10 feet; width, 6 feet 8 inches*

211. INDIAN MEDALLION CARPET

90- Double-arched field of turquoise blue, with maroon spandrels and pendent ivory lotus medallion; maroon border of arches with hanging mosque lamps.

Length, 11 feet 9 inches; width, 9 feet 2 inches

212. HAMADAN CYPRESS CARPET

100- Ivory field, woven with three rows of dark blue cypresses interspersed with figures of *affrontés* birds and leopards pursuing game; sapphire blue border and yellow guards with scarlet rosettes.

Length, 9 feet 4 inches; width, 9 feet

213. BIJUR MEDALLION RUG
 30 - Developing a brick red medallion centring a midnight blue serrated hexagon, with allover floral pattern; scarlet floral border between ivory guards. (*Arliss*)
Length, 7 feet 6 inches; width, 4 feet 5 inches
214. HAMADAN CARPET
 210 - Ivory field, developing a floral trellis in rose, light and dark blue, pale green, and tan; scarlet border of lotus palmettes and latticed floral branches.
Length, 13 feet 9 inches; width, 10 feet 2 inches
215. LAVEHR KIRMAN MEDALLION RUG
 35 - Rose field with celadon green and pendent sapphire blue medallion, patterned with allover design of blossoms and straggling vines. Worn. (*Arliss*)
Length, 12 feet 6 inches; width, 8 feet 8 inches
216. ANTIQUE FEREGHAN MINA KHANI CARPET
 100 - Primrose yellow field, woven with rows of gaily colored Mina Khani rosettes; midnight blue border of interlinked 'turtle' palmettes. Small repair. *Length, 12 feet 4 inches; width, 9 feet*
217. BESHIR BOKHARA RUG
 60 - Deep red field, woven with six rows of three particolored octagons, within a trellis border.
Length, 11 feet; width, 7 feet 10 inches
218. KIRMAN CARPET
 110 - Ivory field, with a Spanish Renaissance design consisting of a fawn strap lattice looped with coronets and enclosing rows of fawn palmettes; ivory floral border.
Length, 13 feet 8 inches; width, 9 feet 4 inches
219. PERSIAN FLORAL CARPET
 950 - Brick-red field, woven with a number of large sapphire blue and tan floral palmettes in a tangle of creepers bearing tiny blossoms; sapphire blue border of angular undulating branches, hung with lotus blossoms. (*Thomas*)
Length, 22 feet; width, 14 feet 3 inches
 [See illustration]



[NUMBER 219]

220. SEREBEND CARPET

60- Blue-black field, woven with rows of tiny scarlet 'pear' motives; scarlet floral spandrels and scarlet and ivory borders.
Length, 16 feet 3 inches; width, 6 feet 10 inches

221. SHIRAZ CARPET

190 Warm wine red field with small rectangles filled with conventionalized flowers and leaves, in blue, green, yellow, and white; eight narrow borders in complementary colors. Repaired.
Length, 17 feet 7 inches; width, 7 feet 8 inches

222. SHIRAZ CARPET

100 Field of deep blue bearing a formalized latchhooked Herati trellis with three diamond medallions in scarlet and ivory; scarlet border of conventionalized leafage.
Length, 15 feet 5 inches; width, 6 feet 3 inches

223. HAMADAN CAMEL'S-HAIR CARPET

100- Natural tan field, woven with a green trellis studded with tiny blossoms; deep blue border of angular green branches, between sky blue guards.
Length, 19 feet 3 inches; width, 10 feet 9 inches

224. PERSIAN 'JEWEL' CARPET

60- *Kelleyi* with scarlet field, woven with rows of 'pear' or 'crown jewel' motives; *tête de nègre* border of formalized serrated vines.
Length, 16 feet 10 inches; width, 6 feet 3 inches

225. ANTIQUE AGRA CARPET

170- *Tête de nègre* ground bearing a formalized allover floral design of lotus and peony flowers and angular branches of foliage, in crimson and ivory; within a border of Fereghan 'turtle' palmettes in colors of the field. Some repairs.
Length, 17 feet 4 inches; width, 11 feet 6 inches

226. KARABAGH RUNNER

35- Blue-black field, woven with a green diamond trellis enclosing stiff stems of magenta, tan, and turquoise blossoms; magenta and Nile green borders.
Length, 17 feet; width, 3 feet 3 inches

227. KURD HERATI RUNNER

Field of sapphire blue with a Herati floral pattern, the arched ends with ivory spandrels; scarlet and yellow floral borders. (Thomas) Length, 17 feet 6 inches; width, 2 feet 10 inches

228. LAVEHR KIRMAN MEDALLION RUG

Soft rose red field overrun with lotus and peony branches, centring an ivory octofoil medallion; ivory floral border. (Arless) Length, 6 feet 4 inches; width, 3 feet 11 inches

PRINTS AND PAINTINGS

239. MEZZOTINT PRINTED IN COLORS BY JAMES S. KING

The Strawberry Girl, after Reynolds; signed proof. Gilded metal frame.

240. EIGHT DRAMATIC PORTRAITS IN MEZZOTINT

Mrs. Jordan as Hippolita, by Jones after Hoppner; Mrs. Hartley, by Houston after Hamilton; David Garrick, by Watson after Reynolds; and five others. All framed. (Arless)

241. TWELVE QUAIN OLD COLORED DRAMATIC PORTRAITS IN CHARACTER

Etched plates, colored by hand. Published by Redington about 1830. All framed. (Arless)

242. TWO WATERCOLOR PAINTINGS

En Promenade, by A. Letor, signed and dated '76; and a Dutch canal scene, by Henry W. Ranger, N.A., signed and dated '84.

Height, 19 $\frac{3}{4}$ inches; width, 11 $\frac{3}{4}$ inches

Height, 20 $\frac{3}{4}$ inches; length, 28 $\frac{3}{4}$ inches

Collection of Samuel S. Laird, American Art Association, 1924

243. OLD MAN TAKING MEDICINE

Louis Moeller, N.A., American: 1855-1930

Interior with a man in shirt sleeves, his head tied in a red bandanna, seated beside a table, pouring medicine into a spoon. Signed.

Height, 8 inches; width, 6 inches

224. SUMMER LANDSCAPE *C. E. Picault, French: XIX Century*
 22 ⁵⁰ View of open country with clusters of trees and a winding river
 in the middle distance. Signed. (*Thomas*)
Panel: Height, 10½ inches; length 14½ inches
245. A MOOR *Francesco Vinea, Italian: b. 1846*
 10 A dark-skinned man in blue and white costume with a broad-
 brimmed straw hat is seated facing right in a Spanish interior,
 with a long pipe beside him. Signed.
Panel: Height, 10 inches; width, 8 inches
246. THE OLD MILL *George H. McCord, A.N.A., American: 1849-1909*
 10- View across a rocky stream to an old grain mill with water
 wheel; a child in a red blouse is playing upon the bank. Signed.
Board: Height, 15 inches; length, 24 inches
247. A DREAM OF VENICE *C. Webster, British: XIX Century*
 15- An afternoon sun shining through mist upon the painted sails
 of a barge and a gondola, before the dome of a church at left.
 Signed and inscribed on back of canvas.
Height, 16 inches; length, 24 inches
248. LA REPRIMANDE *Marie Nicolai, French: XIX Century*
 Pass Seated in an interior is a young mother in blue peignoir, hold-
 ing a sleeping child upon her knees and turning to reprimand a
 small boy standing behind her chair. Signed and dated 1870.
Height, 22 inches; width, 15 inches
249. THE LAGOON, VENICE *M. Foscarini, Italian: XIX Century*
 72 ⁵⁰ Broad expanse of water brightened with the colored sails of
 fishing boats, at the left the domes of an island church. Signed.
Height, 20 inches; length, 30 inches
250. A ROMAN AFTERNOON *Léon Glaize, French: b. 1842*
 20- A fair-haired girl in white and coral gown is standing overlook-
 ing a balustrade; a servant is binding her foot in a sandal.
 Signed and dated 1893. *Height, 22 inches; width, 17 inches*

251. AT THE SOUTH HEAD, GRAND MANAN

Alfred T. Bricher, A.N.A., American: 1837-1908

251 Rocky cliffs along a moonlit sea, breaking in the left foreground about a needle of rock: schooners dot the distant water. Signed and inscribed on back of canvas.

Height, 24 inches; width, 20 inches

252. CROSSING THE LAGOON

Walter Blackman, American: XIX Century

252 Expanse of smooth water dotted with sailing vessels; a peasant girl, in a scow filled with flowers, punting across the foreground. Signed.

Height, 22½ inches; length, 40 inches

253. JULIET AND THE NURSE

Elise Göbeler, German: XIX Century

253 The old woman, in red velvet, is asleep in an armchair before an open window, the sleeping Juliet at her feet. Signed and dated illegibly.

Height, 31 inches; width, 22 inches

From the Goupil Galleries, New York

254. TEN PASTEL PAINTINGS

Mary Helen Carlisle, American: Contemporary

254 Colorful landscape and garden scenes. Signed with initials. Framed in passepartout, one in wood. [Lot.] (*Arless*)

255. TWO PAINTINGS

255 Oil painting depicting a flock of sea gulls in flight along the coast, signed Chas. H. Woodbury; watercolor depicting a rural farm scene, signed Gerald Ackermann. Framed. [Lot.] (*Arless*)

256. THREE PAINTINGS

256 A still life of fruit, by Marston Ream, signed; a Fawn in a Landscape, by William Holbrook Beard, N.A., signed; and a portrait of an Indian boy, by Alessandro Abbiati, signed and dated 1876. [Lot.]

257. TWO OIL PAINTINGS

10 A pastoral scene, by Milton H. Lowell, signed; and a landscape, by Franklin de Haven, N.A., signed.

Height, 12 inches; length, 18 inches

Panel: Height, 11 3/4 inches; length, 15 3/4 inches

258. FOUR PASTEL PAINTINGS

5- Mary Helen Carlisle, American: Contemporary

Attractive garden and park vistas. Signed with initials. Framed. [Lot.] (*Arliss*)

259. TWO PAINTINGS

25 The Song, depicting four children in a landscape, by A. Telser, signed; and a group of four monks conversing, by Adolf Hum- burg.

260. HARBOR SCENE *Joseph Cartwright, British: c. 1790-1829*

10- Schooners sailing a harbor, with a frigate anchored in the fore- ground. Signed, and dated 1812.

Watercolor: Height, 15 3/4 inches; length, 23 inches

261. FOUR COLORED POLITICAL CARICATURES *By John Doyle*

12 50 Hand colored lithographs published by T. McLean. 1829-30. All framed. (*Arliss*)

262. FIVE ENGRAVED VIEWS IN COLOR

5 American, English, French, and Japanese. All framed. (*Arliss*)

263. THREE COLOR REPRODUCTIONS

5 After famous paintings, including Mrs. Robinson after Rom- ney. All framed. (*Arliss*)

264. LOT OF PRINTS AND PORTRAITS

27 10 Includes two original portraits of George Arliss, pen and ink by 'Marcus' and pencil sketch by James Montgomery Flagg. In all, 14 pieces, all framed. (*Arliss*)

[END OF FIRST SESSION]

Second and Last Session

Saturday, December 2, 1933, at 2:15 p.m.

Catalogue Numbers 265 to 468 Inclusive

EGYPTIAN ANTIQUITIES

265. A COLLECTION OF EGYPTIAN SCARABS AND BEAD NECKLACES
Comprising about 25 scarabs in faïence, carnelian, and other minerals, mostly of the XVIII-XXVI dynasties; four faïence and glass bead necklaces; and nine assorted pieces of jewelry, including a pair of gold earrings and various rings. [Lot.]
Collection of the late Charles P. Senter
266. A COLLECTION OF EGYPTIAN AND OTHER INTAGLIOS AND CYLINDRICAL SEALS
Comprising about 85 intaglios, some highly interesting, in carnelian, smoky agate, sard, and other minerals, together with nine cylindrical seals, eight of which are engraved. [Lot.]
Collection of the late Charles P. Senter
267. A COLLECTION OF EGYPTIAN, GREEK, AND OTHER ANTIQUITIES
Comprising twelve Egyptian bronze figurines of deities and animals, a number of pottery vessels and figurines, Babylonian baked clay tablets with cuneiform inscriptions, Egyptian *ushabti* and faïence charms, bronze mirrors, and many other antiquities; in all, more than one hundred pieces. [Lot.]
Collection of the late Charles P. Senter

BRONZES BY BARYE, PROCTOR, AND RODIN

ANTOINE LOUIS BARYE

FRENCH: 1796-1875

268. CROUCHING HARE
Plump sitting figure with ears laid back, signed BARYE, on grotte marble plinth. (Sutton) Height, 13 $\frac{3}{4}$ inches

ANTOINE LOUIS BARYE

FRENCH: 1796-1875

269. RECLINING FAWN

Supple figure of a young fawn crouching; greenish patina; signed BARYE. On Belgian black marble plinth. (*Sutton*)

Length, 3½ inches

80

ANTOINE LOUIS BARYE

FRENCH: 1796-1875

270. RUNNING IBEX

Supple figure of a running male making his way through high grass; on oval base signed BARYE. (*Sutton*)

Height, 3¾ inches

30

ANTOINE LOUIS BARYE

FRENCH: 1796-1875

271. DOE AND FAWN

Sitting figures of a doe and a young deer, crouched side by side; on oblong base signed BARYE. (*Sutton*)

Length, 6 inches

40

ANTOINE LOUIS BARYE

FRENCH: 1796-1875

272. STORK GRASPING A SNAKE

Immobile figure of a stork standing on one leg and grasping with the other claw a snake coiled about its leg. Signed BARYE. (*Sutton*)

Height, 5 inches

65

ANTOINE LOUIS BARYE

FRENCH: 1796-1875

273. STANDING BULL

Sturdy figure, standing at gaze, with green patina; on oblong base signed BARYE, and *griotte* marble plinth. Late cast, probably posthumous. (Sutton) *Length, 6 inches*

ANTOINE LOUIS BARYE

FRENCH: 1796-1875

274. FOUR BAS RELIEFS

Oblong plaquettes chiseled with running figures of does and a lynx devouring a dead bird. One signed BARYE. (Sutton)

Lengths, 5 $\frac{1}{4}$ to 8 inches

ANTOINE LOUIS BARYE

FRENCH: 1796-1875

275. POINTER CHECKING

Well modeled figure of a sporting dog checking abruptly on an outthrust left forepaw; on oval rocky base signed BARYE.

Length, 7 inches

(Sutton)

[See illustration on following page]

ANTOINE LOUIS BARYE

FRENCH: 1796-1875

276. A CHARGER

Prancing figure of a spirited horse with near foreleg raised; on oblong base signed BARYE, with *griotte* marble plinth. (Sutton)

Height, 4 $\frac{3}{4}$ inches

[See illustration on following page]



[NUMBERS 275-278]

ANTOINE LOUIS BARYE

FRENCH: 1796-1875

277. YOUNG BUCK

100- Walking figure of a young stag of six points, with off rear leg raised: on oval base signed BARYE, and *griotte* marble plinth. Green patina. (Sutton) Height, $5\frac{3}{4}$ inches

[See illustration]

ANTOINE LOUIS BARYE

FRENCH: 1796-1875

278. PRANCING STAG

140 Vigorously modeled figure of a stag of ten points with head held high and near foreleg raised; on oval base signed BARYE, and *griotte* marble plinth. (*Sutton*) *Height, 7½ inches*

[See illustration]

ANTOINE LOUIS BARYE

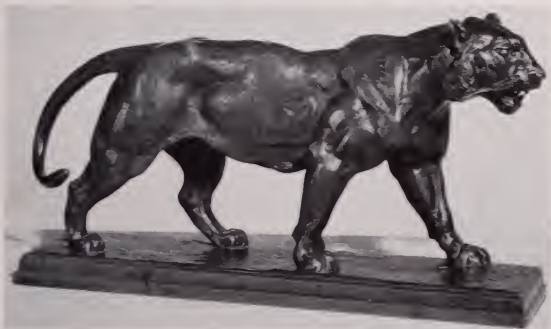
FRENCH: 1796-1875

279. WALKING LIONESS

75- Lean muscular figure with snarling jaws, the left fore and rear legs advanced; on oblong base signed BARYE. (*Sutton*)

Length, 16½ inches

[See illustration]



[NUMBER 279]



AUGUSTE RODIN

FRENCH: 1840-1917

[Bronze Statuette]

280. CELLE QUI FUT HEAULMIÈRE

Nude figure of an aged woman with head lowered, seated upon a rock and leaning upon her left hand. Signed A. RODIN.

Height, 19½ inches

Note: An original of this work is in the Musée du Luxembourg, Paris. The subject derives from the famous poem *Celle Qui Fut La Belle Heaulmière*, by François Villon.

[See illustration above]

175-



A. PHIMISTER PROCTOR, N.A.

AMERICAN: 1862-

[Bronze Group]

281. INDIAN BRAVE MOUNTED

Lean muscular figure of a naked Indian chief with feathered headdress flying in the wind, and holding a spear, checking a spirited horse; oblong base, signed A. PHIMISTER PROCTOR, and dated 1898. Green marble pedestal.

Height of group over all, 53½ inches; of pedestal, 40 inches
Gold Medal, Paris Exposition, 1900

[See illustration above, greatly reduced]

282. BRONZE STATUETTE

- 12 ⁵⁰ Nude figure of a bearded man with arms raised to protect his averted head, as though to ward off a blow. Marble base. (*Arliss*) Height, 11½ inches

DAMASKS, BROCADES, VELVETS
AND EMBROIDERIES

283. PAIR IMPERIAL CHINESE GOLD- AND SILK-EMBROIDERED CUSHIONS

- 30- Octagonal hassock covered in canary yellow satin, embroidered with five-clawed Imperial dragons amid clouds. (*Sutton*)

284. EARLY AMERICAN NEEDLEWORK SAMPLER *Dated 1843*

- 17 ¹⁰ Worked in colored worsted on scrim with two lovers seated on a bench in a garden, in a border of flowers, and the legend: *Cornelia Reill, aged 11 years, Brooklyn, L. I., 1843*. Inlaid mahogany frame. Height, 22 inches; width, 21 inches

285. OLD ENGLISH PAINTED VELVET PICTURE

- 12 ¹⁰ Depicting baskets of fruits and flowers and a bird. Gilded frame. Height, 13 inches; width, 18 inches

286. TEN LACE BOUDOIR PILLOWS

- 60- Assorted. [Lot.] (*Thomas*)

287. GOLD-EMBROIDERED CRIMSON VELVET PORTFOLIO AND DESK BOX

- 25- Worked with a border of vines and wheatears, and four *fleurs de lis* enclosing a garlanded monogram.

288. GOLD-EMBROIDERED AND NEEDLEPAINTED VELVET CUSHION AND PORTFOLIO *Italian, XVI-XVII Century*

- 35- Long cushion with beautiful orphrey panel embroidered with Renaissance scrollings and two needlepainted roundels of saints, bordered with garnet velvet of later date; and a velvet portfolio with appliqué escutcheon. [Lot.]

289. PAIR RUBY VELVET AND GOLD- AND SILK-NEEDLEPAINTED
CUSHIONS *XVII Century*
40- Heavy old velvet banded with gold galloon, and enclosing late
Renaissance orphrey panels needlepointed with figures of SS.
Peter and James.
290. VIEUX ROSE GOLD BROCADE PANEL *Louis XV Period*
30- Brocaded in gold, silver, and silk thread with undulating
branches of roses and peonies. Worn. (Thomas)
Length, 58 inches; width, 41 inches
291. TWO RUBY VELVET VALANCES *Italian, XVII Century*
30- With appliqué-embroidered gold strapwork and gold fringe;
lined. *Total length, 15 feet 3 inches; depth, 13½ inches*
292. GOLD- AND SILVER-EMBROIDERED LEAF GREEN SILK
TABLE COVER *French, Late XVII Century*
30- Green silk, appliqué-embroidered with a border of rococo
scrolls and corner vases inset with needlepointed cartouches of
animals, and filled with naturalistic flowers. Fine quality.
Length, 6 feet 6 inches; width, 40 inches
293. GOLD, SILVER, AND SILK BROCADE COVERLET
90- *Louis XV Period*
Ruby ground striped in gold, and brocaded with silver-edged
serpentine bands superimposed by sprays of peonies with green
ferns. (Thomas)
Length, 6 feet 8 inches; width, 6 feet 5 inches
294. GOLD, SILVER, AND SILK BROCADE COVERLET
75- *Louis XV Period*
Similar to the preceding. (Thomas)
Length, 6 feet 8 inches; width, 6 feet 5 inches
295. CHINESE GOLD AND SILK KO'SSU TAPESTRY HANGING
XVIII Century
4- Worked with numerous figures of scholars and children con-
versing, painting scrolls, playing chess, rowing on the lake, and
otherwise occupied, in a hilly landscape; imperfect.
Height, 6 feet 5 inches; width, 6 feet 3 inches

296. LATE GOTHIC ROSE AND GOLD BROCADE PANEL

Venetian, circa 1500

27 ¹⁰ Brocaded with huge strap ogivals joined by cinquefoil blossoms and enclosing clusters of lilies and stems of carnations in old gold, on a rose ground. Rare.

Length, 50 inches; width, 27½ inches

297. RARE JARDINIÈRE VELVET PRAYER RUG, AFTER A GHIORDES ORIGINAL

Italian(?), Early XVIII Century

100- Olive tan field beneath a stepped and pointed prayer arch, the spandrels and frieze woven with crimson blossoms; striped crimson and ivory guards between tan and olive borders.

Length, 5 feet 2 inches; width, 47 inches

298. SILVER- AND SILK-EMBROIDERED AND PAINTED BANNER

Spanish, Late XVII Century

40- Swallowtail banner heavily embroidered in padded and colored silks with a floral design and Biblical insignia, studded with colored stones, and centring an oval painting of the Madonna and Child.

Height, 7 feet 1 inch; width, 41 inches

299. CHENILLE EMBROIDERED IVORY SATIN COPE

Southern French, Early XVIII Century

27 ¹⁰ Finely embroidered with chenille with floral sprays, the orphreys with *panaches* and sprays of lilies, the hood with an oval medallion of a shepherd. Worn.

Length, 8 feet 10 inches; depth, 53 inches

300. OLIVE GREEN VELVET COPE *Spanish, XVIII-XIX Century*

Lustrous velvet banded in gold galloon, the orphreys and hood fringed.

Length, 7 feet 8 inches; depth, 59 inches

301. CRIMSON VELVET TABLE RUNNER *Genoese, XVII Century*

Heavy antique velvet, bordered with gold galloon.

Length, 8 feet 7 inches; width, 25½ inches

302. PAIR WINE RED CUT AND UNCUT VELVET HANGINGS

Genoese, XVII Century

Developing a scrolling design of urns of leafage supporting huge peonies, in an old gold ground. Edged with gold galloon.

Length, 12 feet 8 inches; width, 33 inches

303. PAIR WINE RED CUT AND UNCUT VELVET HANGINGS

Genoese, XVII Century

Similar to the preceding.

Length, 12 feet 8 inches; width, 33 inches

304. TWO WINE RED CUT AND UNCUT VELVET HANGINGS

Genoese, XVII Century

Similar to the preceding.

Length, 12 feet 5 inches; width, 33 inches

305. TWO WINE RED CUT AND UNCUT VELVET HANGINGS

Genoese, XVII Century

Similar to the preceding.

*Length, 12 feet 10 to 12 feet 8 inches; width, 33 inches*306. MOSS GREEN VELVET COVERLET *Italian, XVII Century*

Of rich deep emerald green velvet, showing former applique of strap scrolling and cartouche. *Length, 13 feet; width, 5 feet*

307. PAIR OLD GOLD AND CRIMSON CUT AND UNCUT VELVET HANGINGS *Italian, XVII Century*

Woven with a repeated pattern of urns of leafage and ferns bearing lotus blossoms and lilies: banded in gold galloon, one end fringed. *Length, 12 feet 10 inches; width, 6 feet 2 inches*

308. APPLIQUÉ-EMBROIDERED OLIVE VELVET COPE

Spanish, XVIII-XIX Century

The hood and orphreys appliqué-embroidered in gold, silver, and silk threads with branches of leaf scrolls bearing flowers and grapes. *Length, 7 feet 9 inches; depth, 48 inches*

309. TWO EMERALD AND MOSS GREEN VELVET HANGINGS

Spanish, XVIII Century

35 Paneled in gold galloon.

Length, 10 feet 10 inches; width, 57 inches

Length, 5 feet 7 inches; width, 53 inches

310. FOUR PAIRS GOLDEN YELLOW SILK DAMASK HANGINGS

Louis XIV Style

105 Bold symmetrical design of huge vasiform floral sprays; lined and interlined. (Thomas)

Length, 9 feet; width of each, 47 inches

311. TWO GREEN VELVET HANGINGS *Spanish, XVIII Century*

35 With velvet appliqué design, paneled in gold galloon.

Lengths, 8 feet 4 inches and 5 feet 9 inches; width, 52 inches

312. FIVE PAIRS SALMON PINK SILK TAFFETAS HANGINGS

Lined; somewhat faded. (Thomas)

20- *Length, 9 feet; widths, 45 inches and 6 feet*

313. THREE PAIRS ROSE CRIMSON SATIN LAMPAS HANGINGS

Louis XVI Style

45 Bordered in gold with three laurel-wreathed and festooned urns. Lined and interlined. (Thomas)

Length, 8 feet 3 inches; width, 34 inches

314. FOUR PAIRS BLUE SILK TAFFETAS HANGINGS
WITH VALANCES

45 Turquoise blue taffetas, lined and interlined and trimmed with a particolored silk fringe. With four scalloped valances to match, and tiebacks. [Lot.] (Thomas)

Length, 8 feet 2 inches; width, 44 inches
Depth of valance, 18 inches

315. PAIR GOLDEN YELLOW BROCATELLE HANGINGS

Louis XIV Style

35 Design of coroneted floral arabesques. Lined and interlined. (Thomas)

Length, 8 feet 7 inches; width, 46 inches

316. SIX BEIGE SILK TAFFETAS HANGINGS

Two pairs window hangings trimmed with a fringed braid, a door hanging, and a reversible portière; lined and interlined.

[Lot.] (Thomas)

Lengths, 6 feet 8 inches to 8 feet; widths, 46 inches

317. FOUR PAIRS PRINTED CRETONNE HANGINGS

WITH TWO VALANCES

Regency Style

Printed with urns of flowers within a floral lattice; lined and interlined. (Thomas)

Lengths, 6 feet 8 inches to 8 feet; widths, 48 inches

318. PAIR ROSE PINK GLAZED CHINTZ HANGINGS WITH VALANCES

Printed with peony shrubs and perched birds, and figures of two stags, flanked by spiral columns entwined with flowers. Lined and interlined. (Thomas)

Length, 8 feet 3 inches; width, 48 inches

319. THREE PAIRS FAWN SILK BROCADE HANGINGS

AND A PORTIÈRE

Louis XVI Style

Brocaded with festooned urns of flowers alternating with rosetted medallions; lined and interlined. Worn. (Thomas)

Hangings: Length, 7 feet 9 inches; width, 46 inches

Portière: Length, 6 feet 4 inches; width, 47 inches

320. KASHMIR SHAWL

With close 'Paisley' design in subdued red, green, and blue.

(Sutton)

FURNITURE AND DECORATIONS

321. FOUR EARLY AMERICAN ENAMEL AND GILDED METAL

MIRROR KNOBS

Circular, framing white enamel plaquette with head of Benjamin Franklin and of the Marquis de Lafayette in sepia.

Diameter, 1 $\frac{3}{4}$ inches

322. TWO BRONZE BAS RELIEF MEDALLIONS

David d'Angers, French: 1788-1856

15 - Profile heads of Schiller and Goethe, signed, one dated 1820.
Posthumous casts. (Sutton) *Diameter, 9 inches*

323. CHINESE DECORATED LACQUER TEA CHEST

12 ¹⁰ - Decorated in black on a brownish red ground with a Chinese
figure scene, butterflies, and flowers. (Thomas)
Length, 15¾ inches

324. EMPIRE PAINTED AND DECORATED TOLE TRAY

20 - Oval tray painted red, with gilded floral border and circular
medallion of a nymph and amor. (Thomas) *Length, 28 inches*

325. TWO LOUIS XV PAINTED AND DECORATED FANS

French, XVIII Century

90 - The foils painted with allegorical and pastoral subjects, one
with staves and guards in richly carved and polychromed ivory,
the other in mother-of-pearl, decorated with rococo ornament.
In carved and gilded frames. (Thomas)

326. TWO OLD INLAID ROSEWOOD MUSIC BOXES

20 - Inlaid in exotic woods with floral designs and musical trophies;
containing musical mechanism and rolls. (Sutton)
Lengths, 20 and 22 inches

327. LOUIS XVI BRONZE DORÉ MANTEL CLOCK

F. Barbedienne, Paris

37 ¹⁰ - Drum surmounted by an urn of grapes festooned with laurel,
on shaped plinth; a reproduction of fine quality.
Height, 15¼ inches

328. STAINED AND PAINTED GLASS PANEL

25 - Exhibiting the Tudor coat of arms, surmounted by *fleurs de lis*,
and surrounded by leaf arabesques. (Thomas)
Height, 18½ inches; width, 14 inches

329. HISPANO-MORESQUE COPPER LUSTRE PLAQUE *Circa 1600*

17 ¹⁰ - Decorated in copper lustre on a green ground with two borders
of spade palmettes centring a boss. Repaired.
Diameter, 14¾ inches

330. FLORENTINE MAJOLICA WINE JUG *Early XVI Century*
 With shaped spout and strap handle, decorated with a pine-apple in blue, green, orange, and yellow. Neck repaired; foot imperfect. *Height, 10 inches*

331. GUBBIO LUSTRE PLATE *XVI Century*
 Small plate with bossed *cavetto*, decorated in yellow and ruby lustre with a flaming heart within a border bossed with leafy motives. Repaired. *Diameter, 7¾ inches*

332. BRONZE DORÉ CLOCK *Louis XVI Style*
 Formed as figures of nymphs and cupids standing beside and surmounting a plinth which contains the movement. *Height, 11 inches*

333. ANTIQUE PAINTED AND CARVED WOOD MODEL
 OF A SHIP OF THE LINE
 Three-masted vessel with rigging and deck gear, mounted with numerous guns in three tiers. Needs some repairs. *Height, 26 inches; width, 26 inches*

334. DECORATED BLACK LACQUER NEST OF TABLES
 Three tables, decorated with hunting dogs within elaborate gold borders, on a black ground. [Lot.] (Sutton) *Height, 29 inches; width, 22½ inches*

335. TWO PAIRS ADAM GILDED WALL SCONCES
 In the form of bowknotted oval garlands of husks, supporting three arms for lights, hung with bead lustres and fitted for electricity. (Thomas) *Height, 33½ inches; extension, 9½ inches*

336. CHILD'S COLONIAL MAPLE SLANT-FRONT DESK-ON-FRAME
 Delightful slant-front fitted desk with three long drawers, on cabriole-leg frame with valanced apron. *Height, 32 inches; width, 22 inches*

- 20- 337. CHINESE SILK- AND GOLD-EMBROIDERED FIRE SCREEN
Sapphire blue satin, embroidered with peasant family groups at various domestic pursuits; in black and gold lacquer frame. (Sutton) Height, 45 inches; width, 39½ inches
- out 338. LOUIS XV BOIS DE ROSE MARQUETERIE TABLE
MOUNTED IN BRONZE DORÉ
Dainty small oval table with drawer, pull-out shelf, and under-shelf, on gently curved and tapered supports; inlaid with floral *marqueterie* and bordered with gilded bronze molding. Height, 28 inches; width, 12 inches
Collection of Mr. and Mrs. F. Kleinberger, American Art Association-Anderson Galleries, 1932
- 35- 339. MAHOGANY CABRIOLE-LEG LOWBOY Colonial Style
With three drawers and carved web feet. Height, 29 inches; length, 35 inches
- 55 340. SHERATON MAHOGANY CARD TABLE American, circa 1800
Semi-circular hinged top, banded frieze on round reeded and tapering legs. Height, 28½ inches; length, 35½ inches
- 50- 341. GEORGIAN TURNED MAHOGANY TILTING-TOP TABLE
Circular top, tilting on baluster column and snake-foot tripod. (Arliss) Height, 28 inches; diameter, 32½ inches
- 250 342. DECORATED SATINWOOD SERPENTINE-FRONT COMMODE Sheraton Style
With three drawers painted with floral festoons flanked by concave cupboards with oval medallions of baskets of flowers; top painted with vignette of a village fair, and a floral border. (Thomas) Height, 36¼ inches; length, 50 inches
- 20- 343. JAPANESE BLACK AND GOLD LACQUER TEA TABLE
Two-tier table with two drawers, decorated in slight gold relief with a musician on a bridge. (Sutton) Height, 19¾ inches; length, 24 inches



[NUMBERS 47 AND 344]

344. SHERATON INLAID SATINWOOD PEMBROKE TABLE

English, XIX Century

Oblong top with two serpentine drop leaves, in richly figured satinwood banded with kingwood; single end drawer, square tapering legs. *Height, 27½ inches; length open, 39 inches*

[See illustration]

- 50- 345. CARVED AND GILDED OVAL WALL MIRROR *Chippendale Style*
 Bordered with endive scrollings and blossoms, and crested with
 a basket of flowers. (Thomas)
Height, 44 inches; width, 26 inches
- 65- 346. SHERATON INLAID MAHOGANY AND ROSEWOOD LYRE TABLE
English Early XIX Century
 Top with inlaid oval fan patera in plane-tree; two drawers,
 inlaid lyre supports. (Thomas)
Height, 28½ inches; width, 25 inches
 From Arthur S. Vernay, New York
- 60- 347. INLAID SATINWOOD SERPENTINE-FRONT COMMODE
Hepplewhite Style
 With three drawers; banded in tulipwood and inlaid in exotic
 woods with a sunburst within border of honeysuckle, a festooned
 urn and leaf volutes. (Sutton)
Height, 34 inches; length, 53 inches
- 45- 348. CARVED MAHOGANY TILTING-TOP TEA TABLE
Chippendale Style
 Quatrefoil galleried top, tilting on beaded and leaf-carved
 baluster with richly carved tripod ornamented with rams' heads.
 (Thomas) *Height, 29½ inches; width, 24 inches*
- 50- 349. SHERATON INLAID MAHOGANY PEMBROKE TABLE
American, XIX Century
 Oval top with two drop leaves and one drawer, on tapered
 square legs; inlaid with shell paterae and pendent husks. (Sut-
 ton) *Height, 28½ inches; length open, 38½ inches*
- 120- 350. CHINESE BLACK AND GOLD LACQUER NEST OF TABLES
 Four shaped trestle tables decorated with groups of actors on
 pavilion terraces; monogrammed. [Lot.] (Sutton)
Height, 27½ inches; width, 22 inches



[NUMBER 351]

351. SET OF SIX SHERATON CARVED MAHOGANY SIDE CHAIRS

English, Late XVIII Century

Molded and slightly arched open back with three grooved vertical slats, shaped seat in yellow leather of later date, and tapered square legs with stretchers.

[See illustration of two]

352. CARVED MAHOGANY AND CRIMSON DAMASK ARMCHAIR

Chippendale Style

Square back, generous seat, and armpads in crimson silk damask; incurvate strap-carved arm supports. Fretted square legs and stretchers. (*Thomas*)

353. LOUIS XV NORMANDY WALNUT SERPENTINE-FRONT
COMMODE

32⁵⁰ With three drawers having scrolled panels and rococo brass handles and escutcheons; cabriole legs.
Height, 37 inches; length, 48½ inches

354. LOUIS XVI ACAJOU PETIT COMMODE

37⁵⁰ Galleried oblong top of gray Ste Anne marble; three small drawers on columnar supports with undershelf. (Thomas)
Height, 30 inches; width, 19 inches

355. FIVE ADAM GILDED GIRANDOLE SCONCES

200 - English, XIX Century
Shield-shaped mirror flanked by *rinceaux*, with husk festoons pendent from a jasper medallion; with two lights fitted for electricity. (Thomas) Height, 45 inches; extension, 9 inches

356. SHERATON DECORATED SATINWOOD PEMBROKE TABLE

80 - Oblong, with two rounded drop leaves and single end drawer; leaf-carved round tapering legs. With painted floral decoration. (Thomas) Height, 28 inches; length open, 36 inches
From Arthur S. Vernay, New York

357. PAIR DIRECTOIRE CARVED WALNUT LOVE SEATS

40 - Italian, circa 1800
Small two-chair-back settee, with carved interlaced splats and slightly conforming and carved horizontal crest rail, curved arms, and tapered square legs. Slip seat in worn rose damask.
Length, 34 inches

358. PAIR CARVED MAHOGANY ETAGÈRES Chippendale Style

50 - Four shaped shelves with pierced galleries, the sides carved with an open diamond lattice and floral medallions. (Thomas)
Height, 39½ inches; width, 32 inches



[NUMBERS 61 AND 359]

359. SHERATON INLAID MAHOGANY SOFA TABLE

English, XVIII Century

Oblong top with two rounded drop leaves, the frieze with two drawers and inlaid floral paterae; on square tapering legs.
 (Thomas) *Height, 27 $\frac{3}{4}$ inches; length open, 53 inches*

From Arthur S. Vernay, New York

[See illustration]

45- 360. PAIR QUEEN ANNE WALL MIRRORS WITH ARCHED CREST
 Handsome upright mirror, consisting of two panels of beveled glass in molded narrow frame of light walnut, the top arched in cyma curves. *Height, 47 inches; width, 19½ inches*

45- 361. LATE SHERATON CARVED MAHOGANY SOFA TABLE
 The top with reeded edge and two drop leaves; two drawers: on end columns with reeded arched feet, and underbraces. *Height, 30 inches; length open, 6 feet 1 inch*
 (Sutton)

25- 362. CARVED WALNUT LOVE SEAT IN ANTIQUE GREEN DAMASK
Queen Anne Style
 Shaped back, seat, and cushion in old green silk damask. *Length, 50 inches*

25- 363. ADAM LAQUÉ AND PARCEL-GILDED OVERMANTEL MIRROR
 Triple mirror with frieze *laqué* parchment and ornamented with gilded urns, festoons, anthemia, and oak swags. *Height, 40 inches; length, 58¾ inches*

45- 364. CHIPPENDALE CARVED AND GILDED WALL MIRROR
 Cartouche-shaped mirror, bordered with leaf scrollings and entwined floral ornament, with two figures of perched eagles, and crested by a rose. (Thomas) *Height, 56 inches; width, 35 inches*

40- 365. CARVED MAHOGANY ARCHITECT'S TABLE *Georgian Style*
 Oblong rising top, the pull-out frame with leather-covered top concealing fitted interior, on four columnar legs. Carved with acanthus leafage and ornament. (Thomas) *Height, 30½ inches; length, 35¾ inches*

45- 366. DECORATED WALNUT AND BLUE VELVET WING CHAIR
Queen Anne Style
 Deep back with wings, scrolled sides and seat cushion in blue velvet; cabriole legs with gilded leaf decoration.



[NUMBER 367]

367. CARVED MAHOGANY DINING SUITE *Chippendale Style*
 Comprising two arm and eight side chairs; open leaf-carved back with Gothic ribbon splat, slip seat in printed rep on rails carved with leaf-scrollings, and square stretchered legs. (Thomas)

100- [See illustration of part]

368. WILLIAM AND MARY OAK CHEST OF DRAWERS ON FRAME *English, Late XVII Century*
 Fitted with four beaded drawers; on spirally twisted stretchered legs with bun feet. (Arless)
 Height, 39½ inches; width, 27½ inches
 Collection of Lady Wellesley

369. SHERATON INLAID MAHOGANY CARD TABLE

American, XVIII Century

45- Semi-octagonal hinged top, on inlaid square tapering legs bordered with banding. *Height, 29 inches; length, 36 inches*

370. GEORGIAN MAHOGANY CHEST-ON-CHEST

English, XVIII Century

50- With two small and five long graduated drawers between imbedded fluted pilasters; bracket base. (*Arliss*)
Height, 5 feet 4 inches; width, 40 inches
Collection of Lady Wellesley

371. CARVED MAHOGANY SERPENTINE-FRONT SERVING TABLE

Adam Style

30- Frieze richly carved with rosettes centred with a festooned urn; six square tapering legs. (*Thomas*)
Height, 36 inches; length, 5 feet

372. CARVED MAHOGANY SUITE

Chippendale Style

110- Comprising: three-back settee, pair of armchairs, and pair of side chairs; with richly carved leaf-scrolled ribbon splat, slip seat in striped satin brocade, and acanthus-carved legs with ball-and-claw feet. (*Thomas*) *Length of settee, 5 feet 8 inches*

373. SHERATON DECORATED AND PARCEL-GILDED

FOUR-BACK SETTEE

English, circa 1800

150- Quadruple open back, the turned top rails with gilded canopy ornaments, the slats decorated with *chinoiseries*; open arms, cane seat, with sky blue silk taffetas loose cushion, round tapering legs. (*Thomas*) *Length, 6 feet*

From Arthur S. Vernay, New York

[See illustration]



[NUMBER 373]

374. SHERATON INLAID ROSEWOOD BOUDOIR WRITING TABLE
 45- Oblong top with rising green silk screen and drawer fitted with writing tablet; on inlaid square tapering legs. (*Thomas*)
Height, 31 inches; width, 23 $\frac{3}{4}$ inches
375. MAHOGANY CLAW-FOOT SIDEBOARD *American, circa 1820*
 35- Rectangular, with three-quarter gallery, and three drawers with glass handles, above cupboards divided by Ionic columns upon claw feet. *Height, 53 inches; length, 5 feet 5 inches*
376. BOUDOIR GRAND PIANO *Chickering & Sons, Boston*
 225- Serial No. 138823. Overstrung trichord grand in mahogany case. With cabriole-leg bench. [Lot.] (*Arliss*)
377. GEORGIAN MAHOGANY CHEST-ON-CHEST, FITTED WITH DESK
 90- *English, XVIII Century*
 Fitted with two small and seven long drawers, concealing a fall-front desk, the chamfered pilasters with applied scroll carving; bracket feet. (*Arliss*) *Height, 6 feet; width, 45 inches*
 Collection of Lady Wellesley
378. DIRECTOIRE DECORATED PAPER THREEFOLD SCREEN
 5- Painted with female figures symbolizing the virtues, in pastel colors on a white ground.
Height, 6 feet; length, 6 feet 3 inches
379. SMALL GEORGIAN MAHOGANY CHINA CABINET
 45- *English, Late XVIII Century*
 Upper part with two glazed doors enclosing shelves, lower part with three small drawers and ringed and tapered round legs.
Height, 5 feet 9 inches; width, 28 inches
380. REGENCY CARVED MAHOGANY BOW-FRONT SIDEBOARD
 120- *English, circa 1815*
 With high ornamental brass rear gallery; two long central drawers and convex side cupboards with secret openings; on four round fluted and tapering legs with lion-mask knees. (*Thomas*)
Height, 53 inches; length, 7 feet
 From Arthur S. Vernay, New York
 [See illustration]



[NUMBER 380]

381. IMPORTANT NEW ENGLAND CARVED WALNUT BLOCK-FRONT
SECRETARY-BOOKCASE *American, XVIII Century*

900- In two parts. The upper with arched broken pediment surmounted by three flaming vase finials and having deep cornice enriched with a torus and broad cove molding; arched and paneled double doors ornamented with fluted mock pilasters, opening to interior fitted with shelves and pigeonholes; in the centre of the entablature is a well-carved shell ornament. Underbody in the form of a slant-front writing desk enclosing beautifully fitted interior with drawers, pigeonholes, and central cupboard with secret pilaster drawers; below are four graduated and blocked long drawers trimmed with old willow brasses and bail handles. Richly molded and bracketed base. With restorations.

Height, 8 feet; width, 42 inches

[See illustration]



[NUMBER 381]

382. EARLY AMERICAN PINE DRESSER IN TWO TIERS

17¹⁰ Stand for jugs and basins, called a 'water-monkey'. With three small drawers in the upper shelf, a broad shelf below, and two doors enclosing cupboards.

Height, 52 inches; width, 42 inches

383. CARVED MAHOGANY TALL-CASE CLOCK

Seneca Lukens, Horsham, Pa., dated 1792

90 Hood with rosetted scroll pediment, enclosing metal dial showing phases of the moon and with maker's name; paneled case of later date, with imbedded fluted pilasters. Assembled piece. (*Sutton*)

Height, 7 feet 10 inches

384. WALNUT MARQUETRY LIBRARY TABLE

William and Mary Style

JJ- Oblong top richly inlaid with an oval medallion of leaf-scrollings, the spandrels with birds and flowers, the border with leafage; two drawers and stretchered reverse-scrolled legs inlaid with floral marquetry. (*Thomas*)

Height, 31 inches; length, 5 feet

385. DECORATED SATINWOOD AND CANED BERGÈRE AND PAIR

90- OVAL-BACK ARMCHAIRS

Sheraton Style

Bergère with caned back, arms, and seat, the former centring an oval figure medallion, and with two green silk loose cushions; the armchairs with *ajouré* splat painted with a vase of honey-suckle, and cane seat with silk loose cushion. (*Thomas*)

386. SHERATON INLAID MAHOGANY SIDEBOARD *English, circa 1820*

70- Shaped front with concave central drawer flanked by deep bottle drawers, with lion-mask ring handles; between outset reeded columns continuing as legs. (*Sutton*)

Height, 38 inches; length, 5 feet

387. SETTEE COVERED IN EIGHTEENTH CENTURY FLEMISH VERDURE TAPESTRY

220- The oblong back, closed ends, and seat cushion covered in antique verdure tapestry; columnar claw-foot frame.

Length, 47 inches



[NUMBER 388]

388. SETTEE COVERED IN EIGHTEENTH CENTURY FLEMISH
VERDURE TAPESTRY

Companion to the preceding.

Length, 47 inches

[See illustration]

389. SMALL GEORGIAN MAHOGANY DROP-LEAF DINING TABLE

English, circa 1800

Rectangular top with rounded corners and two hinged leaves, supported on four turned uprights and splayed legs inlaid with ebony lines and ending in brass feet.

*Height, 28 inches; length open, 5 feet 4 inches;
width, 48 inches*

- 400
390. MAGNIFICENT DECORATED COMINO WOOD GRAND PIANO
PAINTED BY F. VINCENT HART *Chickering & Sons, New York*
Overstrung trichord concert grand, the case superbly veneered
with richly grained satiny comino wood and lavishly painted
with cherubs amid clusters of blossoms and leafage, the cover
with an oval landscape medallion and painted on the inside with
putti supporting floral swags; the sides with floral festoons and
banderoles bearing Latin inscriptions; on three supports, each
consisting of a row of five cylindrical columns. Fine tone. Serial
No. 71925. Decorated bench to match. *Length, 7 feet 6 inches*
From Cottier & Co., New York

[See illustration]



[NUMBER 390]

391. GEORGIAN PICKLED PINE CORNER CUPBOARD

English, XVIII Century

35- Upper part with shelves enclosed by glazed convex doors, flanked by paneled stiles, the lower part with two solid doors; flaring dentiled cornice and bracket feet.

Height, 7 feet 5 inches; width, 57 inches

[See illustration]

392. GEORGE III MAHOGANY SECRETARY-BOOKCASE

English, Late XVIII Century

70- Consisting of a cabinet of shelves enclosed by two glazed doors with lozenge-shaped moldings, and with shaped cornice having acorn finals, surmounting a case of four beaded drawers above which a hinged slant flap encloses small drawers and pigeon-holes.

Height, 6 feet 2 inches; width, 43 inches

393. THREEFOLD SCREEN, PAINTED BY PRINCESS TROUBETZKOY

Painted with three arched embrasure niches, the centre one with a perched parakeet of brilliant plumage. (*Arlliss*)

15- *Height, 5 feet 6 inches; length, 5 feet 6 inches*

394. ADAM CARVED AND GILDED PIER MIRROR

Architectural form, with festoons of husks, anthemion pediment, and cresting of an urn flanked by sphinxes; at the base are scrolled gesso arms for lights. (*Thomas*)

60- *Height, 5 feet 6 inches; width, 54 inches*

395. SHELL-CARVED MAPLE DRESSER *American, XVIII Century*

Oblong top, front with long drawer, four small drawers and shell-carved central drawer; scrolled apron and cabriole legs. Shell and apron carving of later date.

70- *Height, 35 inches; length, 45 inches*

396. CARVED MAHOGANY EXTENSION DINING TABLE *Adam Style*

35- Circular top with four extension leaves, the frieze carved with leaf-scrollings and husk festoons; husk-carved square tapering legs. (*Thomas*)

Height, 30 inches; diameter, 5 feet, extending to 10 feet



[NUMBER 391]

397. CARVED WALNUT 'BAMBOCCI' CABINET

Florentine, XVI Century

In two parts, the upper a cabinet of drawers and three architectural portals, the lower part with one drawer above two arched cupboard doors. The frieze and pilasters enriched with sculptured figures in high relief of infant satyrs, and monastic saints.

Height, 6 feet; width, 40½ inches

[See illustration]

398. PAIR CARVED AND GILDED TORCHÈRES

Italian Baroque

Velvet-covered shaft with leaf-carved and gilded baluster, and acanthus-scrolled base ornamented with cherub-heads; each with five lights, fitted for electricity.

Height, 6 feet 5 inches

399. TWO SHERATON WROUGHT IRON CANED GARDEN SETTEES AND A TABLE

Settee with scrolled Directoire frame and X-shaped supports, cane back and seat, with yellow oilcloth seat cushions; circular tripod table with glass top and flowerpot ornament. [Lot.]

(Thomas)

Length of settee, 40½ inches; diameter of table, 40 inches

400. FIVE SHERATON WROUGHT IRON AND CANED GARDEN ARMCHAIRS

En suite with the preceding settees. (Thomas)

401. THREE WROUGHT IRON GARDEN TABLES

One circular, one oblong, and a coffee table; with *vert antique* marble tops. [Lot.] (Thomas)

402. PAIR UPHOLSTERED EASY CHAIRS

With loose seat cushions, and flowered apricot chintz slip covers; fluted round tapering legs. (Thomas)



[NUMBER 397]

403. INLAID MAHOGANY SERPENTINE-FRONT SERVING TABLE

Hepplewhite Style

25- With side drawer, on tapered square legs; inlaid in satinwood and harewood with conch shell and honeysuckle. (Sutton)

Height, 32 inches; length, 37 inches

404. INLAID MAHOGANY BEDROOM SUITE

Sheraton Style

170- Comprising a pair of bedsteads with box springs and mattresses, serpentine-front chiffonier, bedside table, serpentine-front kneehole dressing table with mirror, cheval mirror, and three lattice-back side chairs. Inlaid with borders of satinwood and trimmed with decorated porcelain medallions in the Chelsea style, with ring handles. [Lot.] (Thomas)

405. LOT OF GEORGIAN BRASS FIREPLACE FURNISHINGS

90- Assorted, including a pair of urn-top andirons, two fireguards with pierced vase decoration, mesh fire screen, two sets of fire tools with stands, coal scuttle, and grate. [Lot.] (Thomas)

Height of andirons, 19½ inches; length of guards, 57 and 59 inches

406. WROUGHT IRON CHANDELIER AND PAIR TWO-LIGHT SCONCES
Fitted for electricity. [Lot.]

Diameter of chandelier, 24 inches

TAPESTRIES

407. GOTHIC SILK AND GOLD TAPESTRY PICTURE

Spanish, Early XVI Century

65- Depicting the Savior in wine red and fawn draperies, standing between two tall vases of naturalistic flowers before a black and tan 'damask' background. *Height, 21 inches; width, 18 inches*

408. PAIR FINE BRUSSELS RENAISSANCE TAPESTRY BORDERS

XVI Century

Beautifully woven with naturalistic figures of wild game, serpents, waterfowl, and a leopard mauling a hare, amid wooded landscape, surmounted by a coroneted hatchment enclosed within a wreath of flowers and fruit tied with a rose bowknot; narrow rose edging developing undulating vines.

Length of each, 11 feet; width, 19 inches

409. FLEMISH HUNTING TAPESTRY

XVII Century

Through a wooded glade a number of mounted huntsmen and peasants pursue a wild animal seen in the act of carrying off a sheep; a castle in the distance, a meandering stream in the foreground. Woven in faded greens and tans.

Height, 7 feet 8 inches; width, 10 feet

ORIENTAL RUGS

410. KAZAK RUG

The field of brick red with two latchhooked diamond medallions in blue, ivory, and green; ivory border of latchhooks. (*Arliss*)

Length, 6 feet 2 inches; width, 4 feet 4 inches

411. KABISTAN RUG

Deep greenish blue field scattered with stellate rosettes, within an ivory border of lozenge dies.

Length, 4 feet 10 inches; width, 3 feet 7 inches

412. ROYAL SEHNA KHILIM RUG

Double-sided tapestry-woven rug with blue-black field, finely woven with rows of infloriated 'pear' motives in scarlet and ivory, within a golden yellow border of scarlet carnations. Fine quality.

Length, 6 feet 8 inches; width, 4 feet 2 inches

413. FINE ANTIQUE KABISTAN RUG

Ivory field, woven in many colors with three cruciform saltire medallions with serrated edges, within borders of rosettes and bird's-wing motives. Needs small repairs. (*Thomas*)

Length, 6 feet; width, 4 feet

414. TURKISH SILK PILE RUG

160- Tan field, woven with an arabesqued and pendent floral medallion principally in orange, sky blue, dark gray, and ivory; orange lambrequin border between fawn guards. (Thomas)

Length, 5 feet 10 inches; width, 4 feet 9 inches

415. ANTIQUE KOTCHLI BOKHARA RUG

55- Field of dark red, diapered with broken diamond motives superimposed by a *kotchli*, or cross; the border with an angular 'vine'.

Length, 5 feet 6 inches; width, 3 feet 10 inches

416. KAZAK PRAYER RUG

70- Blue-black field, scattered with square rosettes and centring a latchhooked scarlet and ivory lozenge medallion; ivory border with highly formalized 'vine' motives.

Length, 7 feet 6 inches; width, 4 feet 9 inches

417. ASIA MINOR PRAYER RUG

35- Magenta mihrab beneath a stepped arch, in a sky blue field with magenta cabbage palmettes; ivory border of vari-colored leaves.

Length, 5 feet 4 inches; width, 3 feet 5 inches

418. ANTIQUE SEHNA MEDALLION RUG

90- With two concentric hexagonal medallions in midnight blue and scarlet and ivory spandrels, the whole closely woven with the Herati lattice; midnight blue border of interlinked 'turtle' motives. Very fine weave. (Thomas)

Length, 7 feet 10 inches; width, 5 feet 5 inches

419. PAIR KASHAN MEDALLION RUGS

100- Double-arched field of deep sapphire blue, with arabesqued crimson spandrels and pendent medallions all overrun with scrolling floral branches; sapphire blue lambrequin border.

Length, 6 feet 8 inches; width, 4 feet 2 inches

420. ANTIQUE KABISTAN PRAYER RUG

50- Old-gold field, diapered with a lattice of 'pear' motives beneath a pointed arch, within geometrical borders. Very fine quality.

Length, 5 feet; width, 4 feet 1 inch

421. ANTIQUE SHIRAZ RUG

Field of deep blue with an allover design of pairs of pincer-like leaves in many colors, within a border of red poppies and russet foliage. *Length, 5 feet 9 inches; width, 4 feet*

422. ANTIQUE SHIRAZ ANIMAL RUG

Ivory field, woven with scattered rosettes, shrubs, birds, and animal figures, and three pendent scarlet diamond medallions; five floral guards. *Length, 6 feet 4 inches; width, 4 feet 6 inches*

423. KASHAN MILLEFLEURS RUG

Scrolled field of sapphire blue, with diapered spandrels and pendent medallion, and woven with a *millefleurs* design; crimson floral border. *Length, 7 feet 1 inch; width, 4 feet 4 inches*

424. BERGAMO RUG

Field divided into three compartments with small square medallions and scattered rosettes on grounds of crimson and myrtle green; tile border of latchhooked cruciform motives. *Length, 7 feet 3 inches; width, 5 feet*

425. ROYAL TEKKE BOKHARA RUG

Sang de boeuf field developing four chains of octagons part-colored in orange and ivory, red and deep blue, within a border of octagon rosettes and other geometrical ornament. Fine quality. *Length, 10 feet 3 inches; width, 6 feet 11 inches*

426. ANTIQUE KABISTAN RUG

Field of midnight blue, with scattered rosettes surrounding a stepped double medallion in deep blue and scarlet; ivory latchhooked border. Fine quality. *Length, 7 feet 3 inches; width, 4 feet 5 inches*

427. SEHNA MEDALLION RUG

65- Hexagonal field of ivory, with sapphire blue diamond medallion and stepped spandrels, all closely woven with the Herati pattern; scarlet border of linked 'turtle' palmettes. Fine weave.
Length, 7 feet 7 inches; width, 5 feet 1 inch

428. MESHED RUG

90- *Tête de nègre* field, exhibiting the Herati trellis design centring an aubergine floral medallion in mulberry and ivory; three 'pear' and palmette borders between numerous guards. (*Arliss*)
Length, 12 feet 9 inches; width, 9 feet 9 inches

429. ANTIQUE TEKKE BOKHARA RUG

210- *Sang de boeuf* field, woven with five chains of octagons particolored in orange and dark blue, ivory and red, alternating with latchhooked crosses; border of latchhooked octagon rosettes.
Length, 9 feet 6 inches; width, 6 feet 6 inches

430. LAVEHR KIRMAN MEDALLION RUG WITH INSCRIPTIONS

140- Field of sapphire blue almost obscured by the scrolled celadon green and rose medallion, overrun with branches of lotus and peonies, and centring four blue panels of inscription, the four sides with similar rose red inscription panels; blue floral border. (*Arliss*)
Length, 12 feet 1 inch; width, 8 feet 10 inches

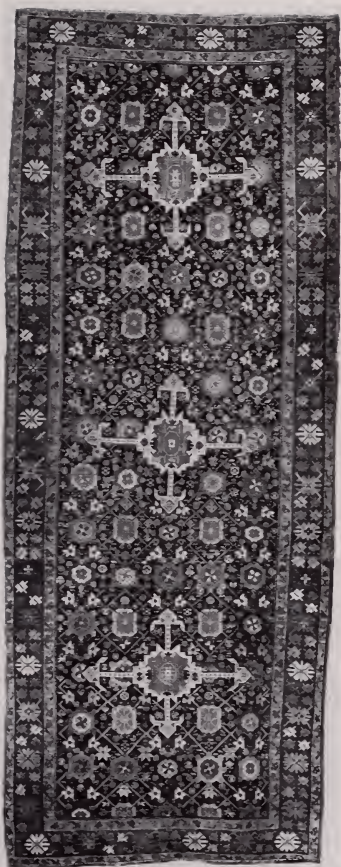
431. ANTIQUE NORTH PERSIAN MINA KHANI CARPET

200- Field of sapphire blue, woven with three cruciform ivory devices in a trellis of blue branches bearing large Mina Khani rosettes amid a multitude of tiny blossoms and S-hooks; maroon border of trellised rosettes, between primrose yellow guards. (*Thomas*)
Length, 14 feet 6 inches; width, 5 feet 9 inches

[See illustration]

432. KIRMAN CARPET

210- Scrolled ivory field with deep blue spandrels and an octofoil crimson medallion, all overrun with floral arabesques; crimson and ivory floral borders.
Length, 14 feet 10 inches; width, 10 feet 5 inches



[NUMBER 431]

433. INDIAN HERATI PALACE CARPET

250- Field of midnight blue, developing a fine Herati trellis design with parti-colored turquoise and cherry red leaves, and centring an ivory floral diamond medallion; cherry red border with angular arabesques connecting floral palmettes.
Length, 23 feet 2 inches; width, 18 feet 2 inches

434. SEREBEND CARPET

170- Brick-red field, woven with rows of infloiated 'pear' motives in blue and green; narrow ivory border with an angular undulating 'vine'. (Thomas) *Length, 16 feet; width, 6 feet 9 inches*

435. SEREBEND CARPET

Design of the preceding. (Thomas)
Length, 16 feet 4 inches; width, 6 feet 7 inches

436. SEREBEND CARPET

170- Similar to the preceding, but slightly smaller. (Thomas)
Length, 13 feet 8 inches; width, 5 feet 8 inches

437. SULTANABAD TABRIZ CARPET

175- Field of midnight blue woven with an allover Herati lattice of rosettes, and centring leaves in turquoise, rose, and tan; rose border of 'turtle' motives and scrolling blue branches.
Length, 17 feet; width, 11 feet 6 inches

439. HERIZ MEDALLION CARPET

160- *Sang de boeuf* double-arched field, with green spandrels and a large old gold diamond medallion, the whole trellised with red and green branches of lotus blossoms and foliage; greenish ivory border of straggling palmettes and foliage.
Length, 21 feet 7 inches; width, 15 feet 2 inches

440. MESHED CARPET

500- Ivory field with the allover Herati lattice design, within a scarlet border of undulating branches bearing lotus palmettes and other blossoms; six floral guards.
Length, 26 feet 2 inches; width, 11 feet

441. ANTIQUE FEREGHAN CARPET

Woven with the allover Herati lattice in a deep greenish blue field with pistache green corners; green border with angular undulating 'vine' bearing tan and pink blossoms. (Thomas)

Length, 12 feet; width, 8 feet 3 inches

442. KAZAK RUG

Scarlet field woven with scattered dies in many colors surrounding three latchhooked plaques; ivory 'arrow-head' border.

Length, 7 feet 7 inches; width, 4 feet 6 inches

443. SEHNA KHILIM RUG

Blue-black field, tapestry-woven with a Karabagh floral design of clusters of red and yellow roses and green and russet leafage; blue and yellow floral guards. Double-sided rug.

Length, 6 feet 7 inches; width, 4 feet 3 inches

444. KAZAK RUG

Field of scarlet with a latchhooked diamond-form pole medallion in green, scarlet, and blue; blue border with a serrated 'vine'.

Length, 7 feet 3 inches; width, 4 feet 10 inches

445. KARABAGH RUG

Blue-black ground *semé* with rosettes, and centred with a skeleton pole medallion in scarlet; rosetted ivory border.

Length, 8 feet 4 inches; width, 3 feet 8 inches

446. ANTIQUE KIR-SHEHR RUG

Field divided into three compartments with stepped mosaic tile design in brown, magenta, and sapphire and sky blue; pinkish tan floral border.

Length, 5 feet 10 inches; width, 3 feet 7 inches

447. TWO BERGAMO RUGS

With geometrical designs in scarlet, green, blue, and ivory within rosetted borders; striped webs.

Length, 4 feet 3 inches; width, 3 feet 1 inch

Length, 4 feet; width, 4 feet 3 inches

448. TWO CAUCASIAN RUGS

60- With ivory grounds, one with an allover design of formalized shrubs, the other with three cruciform medallions; 'arrow-head' and floral borders respectively.

Length, 5 feet 5 inches; width, 2 feet 7 inches

Length, 4 feet 9 inches; width, 3 feet 6 inches

PAINTINGS AND PRINTS

449. MOSQUE INTERIOR

Stephen Chlebowski, German: XIX Century

45- A young woman in rose and mauve gown, veiled, is kneeling in prayer; behind her are two servants. Signed and dated 1872.

Height, 22 inches; width, 16½ inches

450. PORTRAIT OF A GIRL *Jan von Chelminski, Polish: 1851-1925*

10- Bust-length figure of a young girl looking to the right, wearing a white blouse and rose bodice, with a broad flowered straw hat. Signed and dated '91.

Panel: Height, 12½ inches; width, 9¼ inches

From Reichard & Co., New York

451. A SWEET REVERIE *Auguste Toulmouche, French: 1829-1890*

40- Interior hung with a tapestry, with a young girl standing by a table of roses, dressed in a trailing blue gown with white bodice, smelling a rose. Signed and dated 1879.

Height, 24 inches; width, 16 inches

452. WEEHAWKEN FROM UNION HILL, N. J.

David Johnson, N.A., American: 1827-1908

80- Figures are seen upon an ascending path in the right foreground, overlooking a roadway before a view of the Hudson with the city in the distance. Signed on back of canvas, and dated 1862.

453. THE MUSICAL AMATEURS

Adolphe Alexandre Lesrel, French: b. 1839

Elaborate Louis XIII interior with four cavaliers around a table playing various musical instruments, and served by a young girl at left. Signed and dated 1879.

Panel: Height, 33½ inches; width, 25 inches

From the Goupil Galleries, New York

454. A STREAM IN THE WILDERNESS

J. A. Hekking, Dutch: XIX Century

Rocky bed of a swift stream winding through distant hills and pine woods, to cascade in the foreground. Signed.

Height, 36 inches; length, 50 inches

455. DACHAUERINEN

Kleinteich, German: XIX Century

Interior with two women in peasant costume, one seated holding an umbrella, the other standing at the right and gesticulating. Signed and dated 1896.

Height, 34 inches; width, 26 inches

456. VILLAGE CHURCH AT SUNSET

George H. McCord, A.N.A., American: 1849-1909

A country church with spire silhouetted against a glowing sky; two children are sledding upon the snow-covered road over a bridge. Signed and dated 1876.

Height, 36 inches; width, 24 inches

457. TAMBOURINE DANCER

Edouard Richter, French: XIX Century

Moorish interior with a dancer in pink brocade gown with gold girdle and bracelets, holding a tambourine over her head; two maidens seated at right, clapping time. Signed.

Height, 39¼ inches; width, 25½ inches

458. IDYLL

F. Artique, French: XIX Century

Four young girls in pastel-colored robes are seated under a tree on a hilltop overlooking a town, watching a fifth, in pale yellow dress, who is swinging a skipping rope. Signed. (Thomas)

Height, 51½ inches; width, 38 inches

Hon. Mention, Paris Salon, 1903

459. OIL PAINTING OF GEORGE ARLISS AS "DISRAELI"
BY ANGERS RANDOLF

30- Depicting the full-length figure of the actor in Privy Council uniform, in the role of Disraeli. Signed at lower right, and dated '13. Framed. (*Arliss*)
Height, 77 inches; width, 33 inches

460. FLOWERS *George Haquette, French: 1853-1906*

20- Depicting an overturned basket of red and white roses and lilac, spilling upon a gray marble table. Signed.
Height, 20 inches; length, 24 inches
From the Goupil Galleries, New York

461. TWO WATERCOLOR PAINTINGS

20- A Gunmaker of Tangiers, by E. Zampighi, signed; and a barquentine crossing the channel, by Charles Taylor, signed.

462. TWO WATERCOLOR PAINTINGS

20- An interior of a cathedral with figures, by P. Gabrini, dated 1873; and a view of a cathedral from the north, by J. C. Dibdin, dated 1878.

463. COLORED AQUATINT CARICATURE

20- *After Frederick George Byron*
Coming Out of a Country Theatre, engraved by Stadler & Lewis. London, Published Nov. 1, 1802, by Willm. Holland. Framed. Very rare. (*Arliss*)

464. STIPPLE ENGRAVING PRINTED IN COLORS

10- *By W. Nutter after J. Russell*
Martha-Gunn, the Brighton Bather. Fine example of pure color printing, published 1797. Gilt frame. Very rare. (*Arliss*)

465. FOUR EARLY ENGLISH DRAMATIC MEZZOTINTS

5- David Garrick in dramatic and comedy scenes. Engraved by Ward, Val. Green, Fisher, and Finlayson, after Zoffany and Reynolds. All framed. (*Arliss*)

466. FOUR COLOR REPRODUCTIONS OF FAMOUS PAINTINGS

10- The Age of Innocence after Reynolds; Georgina Lennox after Lawrence; Madame Sophie de France after Nattier; Lavinia, Countess Spencer after Reynolds. Gilt frames. (*Arliss*)

467. EIGHTEEN COLORED AQUATINT VIEWS

By *William Daniell*, 1814-25

25- A fine series of colored views from "A Voyage Round Great Britain". All framed. (*Arliss*)

468. FOUR DRAMATIC SCENES IN MEZZOTINT

5- Charles Mathews in character, by Meyer after Harlow; Griffith and Johnson in "The Alchymist", by Van Bleek; "The Clandestine Marriage", by Earlom after Zoffany; Mrs. Siddons and her Son, by Caldwell after Hamilton. All framed. (*Arliss*)

{ END OF SALE }

Session	\$ 11381
2	16792 ⁵⁰
<hr/>	
Total	\$ 28173 ⁵⁰

Appraisals

FOR UNITED STATES AND STATE TAX
INSURANCE AND OTHER PURPOSES



Catalogues

OF PRIVATE COLLECTIONS



APPRAISALS. The American Art Association-Anderson Galleries, Inc., will furnish appraisals, made by experts under its direct supervision, of art and literary property, jewelry, and all personal effects, in the settlement of estates, for inheritance tax, insurance, and other purposes.

Upon request the Galleries will furnish the names of many trust and insurance companies, executors, administrators, trustees, attorneys, and private individuals for whom the Galleries has made appraisals which not only have been entirely satisfactory to them, but have been accepted by the United States Estate Tax Bureau, the State Tax Commission, and others in interest.

CATALOGUES. The Galleries is prepared to supplement this appraisal work by making catalogues of private libraries, of the contents of homes or of entire estates, such catalogues to be modeled after the intelligently compiled and finely printed sales catalogues of the Galleries.



AMERICAN ART ASSOCIATION
ANDERSON GALLERIES · INC

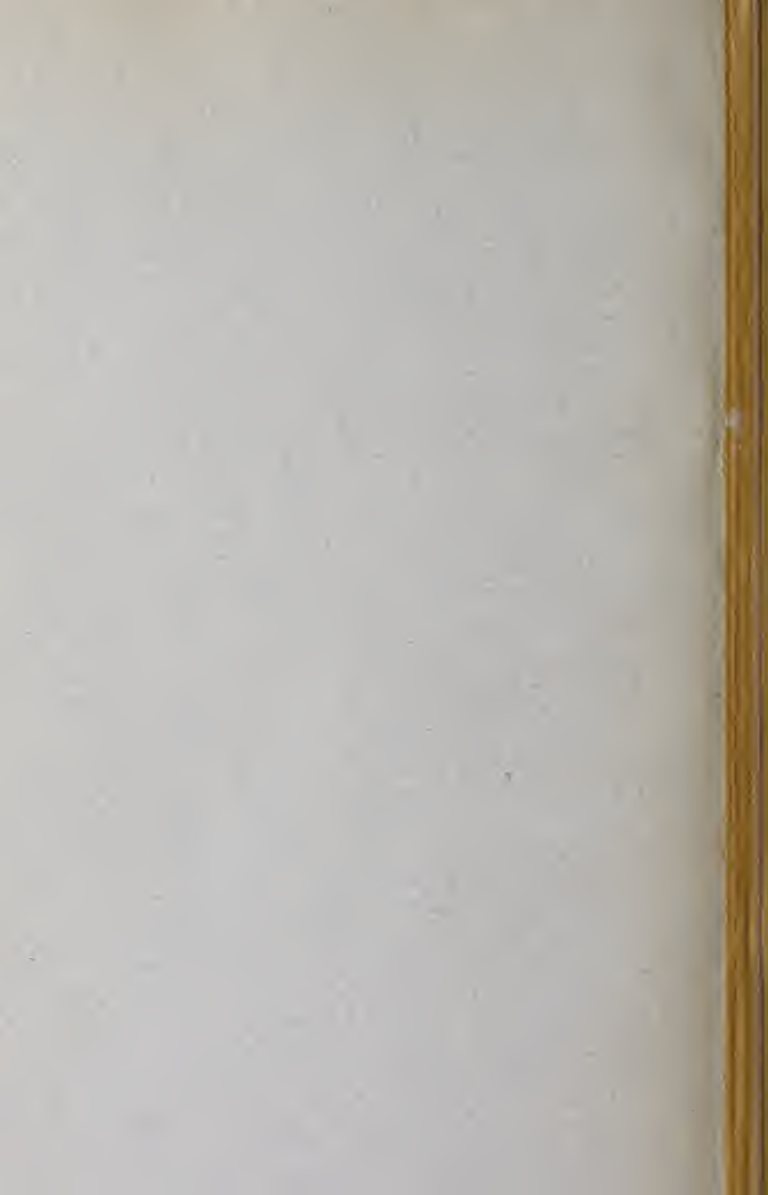
30 East 57th Street, New York City

Telephone: PLAZA 3-1269

Composition and Presswork
by



PUBLISHERS PRINTING COMPANY
William Bradford Press
New York



THE METROPOLITAN
MUSEUM OF ART

Thomas J. Watson Library

